

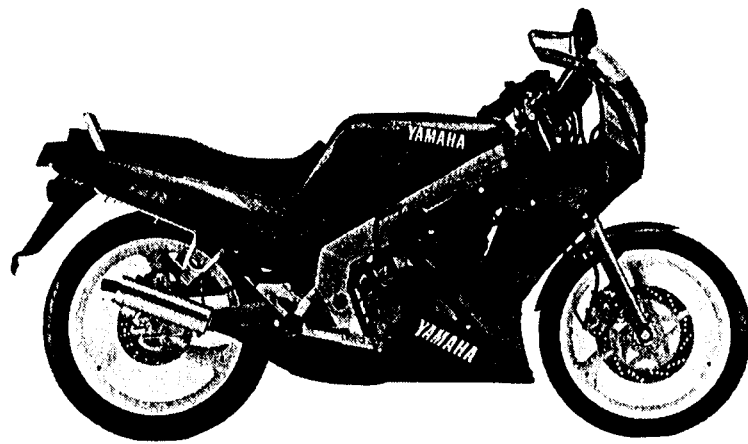
YAMAHA

PARTS CATALOGUE

TZR125'90 (3PA2)

EUROPE

103PA-300E1



FOREWORD

This Parts Catalogue is related to the parts in use for the Yamaha TZR125'90(3PA2). When you are ordering replacement parts for the TZR125'90(3PA2), refer to this Parts Catalogue and quote both part numbers and part names correctly.

1. Modifications or additions which have been made after issue of the Parts Catalogue will be announced in the Yamaha Parts News.
It is advisable that according to the Yamaha Parts News you make necessary corrections to the Parts Catalogue on hand to keep it up-to-date.

2. Abbreviations

The following abbreviations are used in this Parts Catalogue.

- U.R. Use size (thickness) and/or number as required.
- U.N. Use as many as you need.
- A.P. Alternate Parts
- L.M. Local Made
- F# Frame No. (Applicable machine No.)

3. The parts marked with (+) in the parts number column of this Catalogue are not supplied with by Yamaha, those have to be found locally.
4. Parts, which are to be supplied in the form of assemblies, are listed with an indention of one letter's space, and a dot (.) is put against the name of each part.

EXAMPLE CARBURETOR ASS'Y
 . JET, pilot
 . NOZZLE, main

5. Indication of No. of constituent parts for assembly

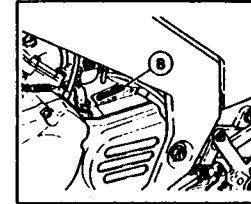
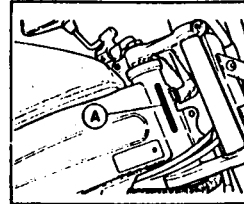
The numeral appearing to the right of each constituent part under the description indicates the quantity of such parts for each individual assembly unit.

EXAMPLE

Part No.	Description	Q'ty	Remarks
2F5-83310-60	FRONT FLASHER LIGHT ASS'Y	2	
115-83311-60	BULB (6V-18W)	1	
1M1-83309-60	REFLECTOR	1	

6. Initial Serial No. and Color Code

(A) Frame Serial No.	2RH-008101 and following
(B) Engine Serial No.	2RH-008101 and following



Color Code	Color Name	Abbreviate
GE	SILKY WHITE	SW
KM	NEW BLACK BLUE	NBB
NJ	FARAWAY BLUE	FWB

7. Applicable colors of graphics are represented in the "Remarks" column by the letter(s) appropriately picked out of the full word(s) showing such colors.

EXAMPLE

Part No.	Description	Q'ty	Remarks
2N4-24110-00-X5	FUEL TANK COMP.	1	MAXIM RED
3J1-24240-10	GRAPHIC, fuel tank set	1	for MXR

CONTENTS

GENERAL SPEC.

ENGINE

Cylinder	B2
Crankshaft. Piston	B3 ~ B4
Water Pump	B5
Radiator. Hose	B6 ~ B7
Oil Pump	B8
Intake	B9
Carburetor	B10
Exhaust	B11
Crankcase	B12
Crankcase Cover 1	B13
Starter	B14
Clutch	B15
Transmission	C2 ~ C3
Tachometer Gear	C4
Shift Cam. Fork	C5
Shift Shaft	C6

CHASSIS

Frame	C7
Fender	C8
Side Cover	C9 ~ C10
Oil Tank	C11
Rear Arm. Suspension	C12
Steering	C13
Front Fork	C14 ~ C15
Fuel Tank	D2 ~ D3
Seat	D4
Front Wheel	D5
Front Brake Caliper	D6

Rear Wheel	D7
Rear Brake Caliper	D8
Steering Handle. Cable	D9
Front Master Cylinder	D10
Stand. Footrest	D11
Rear Master Cylinder	D12 ~ D13
Generator	D14
Flasher Light	D15
Meter	E2
Headlight	E3
Taillight	E4
Handle Switch. Lever	E5
Electrical 1	E6
Electrical 2	E7

INDEX (GENERAL SPEC.)

Numerical Index	L2 ~ L4
-----------------------	---------

INDIVIDUAL SPEC.

FOR SWEDEN

Alternate (Engine)	E9
Alternate (Chassis)	E10
Alternate (Meter)	E11

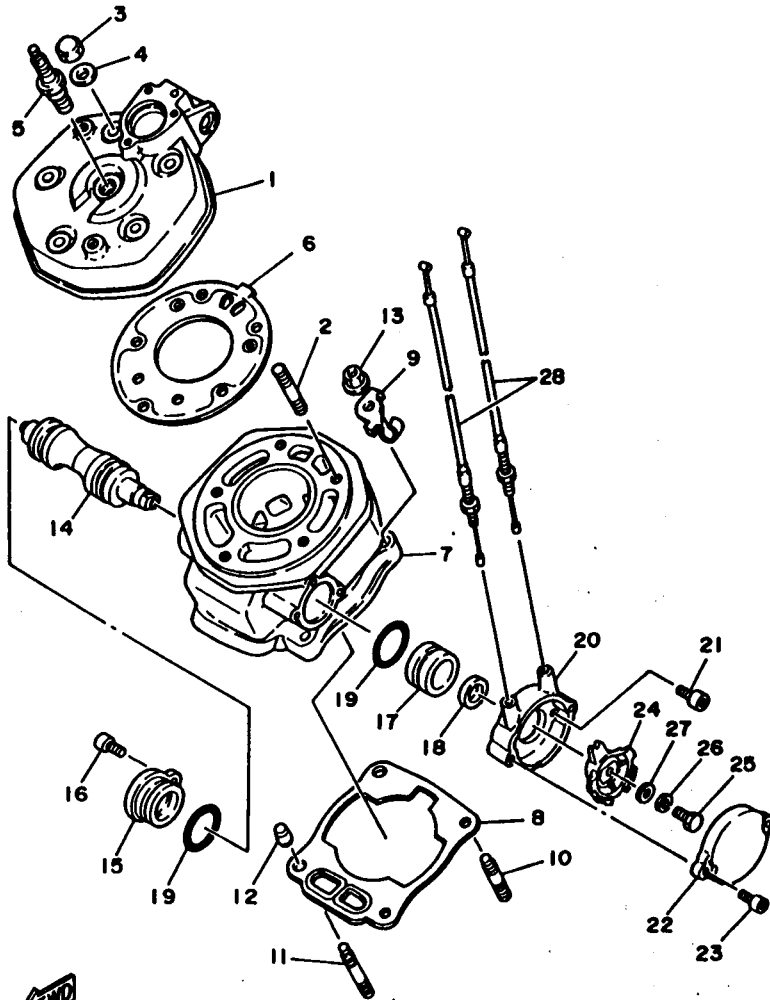
FOR FINLAND

Alternate (Chassis)	E13
---------------------------	-----

INDEX (INDIVIDUAL SPEC.)

Numerical Index	M2
-----------------------	----

GENERAL SPEC.



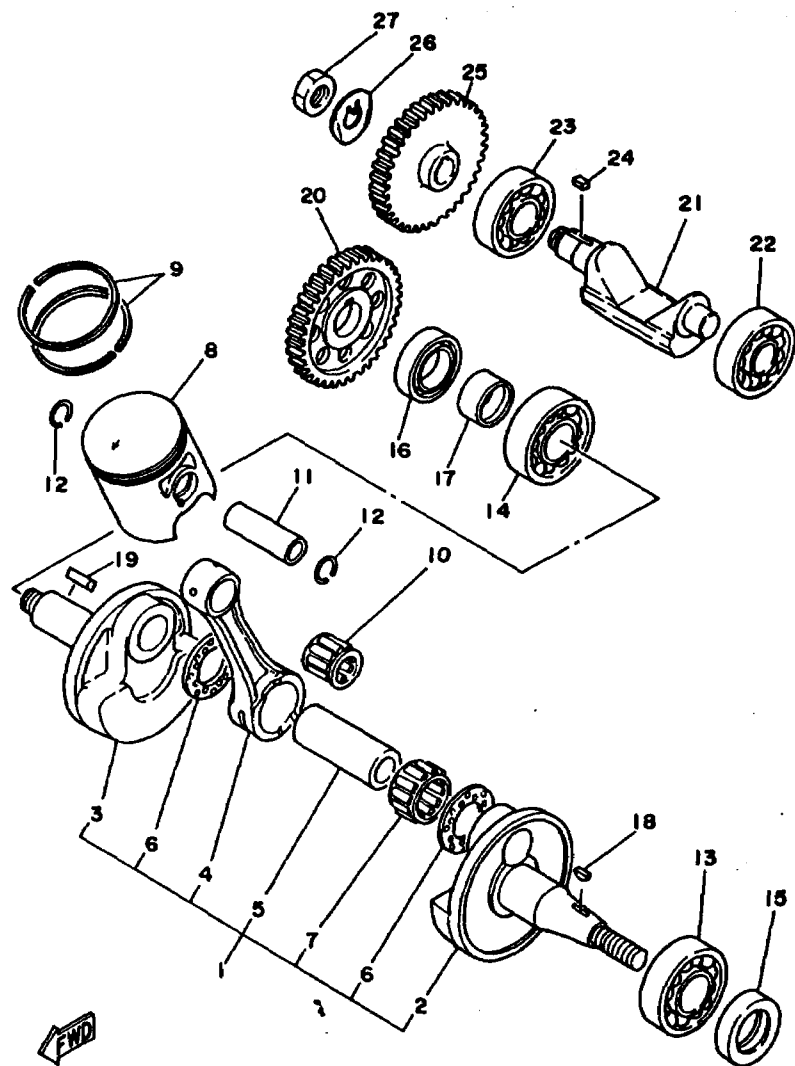
2RH300-7010

FIG. 1 CYLINDER

REF. NO.	PART NO.	DESCRIPTION	Q'TY	REMARKS
1	2RH-11111-00	HEAD, cylinder 1	1	
2	90116-08392	BOLT, stud	5	
3	90176-08040	NUT, crown	5	
4	90201-08649	WASHER, plate	5	
5	94701-00188	PLUG, spark (NGK BR9ES)	1	
6	2RH-11181-00	GASKET, cylinder head 1	1	
7	2RH-11311-00	CYLINDER 1	1	
8	2RH-11351-00	GASKET, cylinder	1	
9	2JK-1131E-00	HOLDER 1	1	
10	90116-08318	BOLT, stud	2	
11	90116-08388	BOLT, stud	2	
12	99510-10114	PIN, dowel	2	
13	90179-08491	NUT	4	
14	2RH-1131A-00	VALVE 1	1	
15	2RH-1131E-00	HOLDER 1	1	
16	91316-05012	BOLT	1	
17	29L-1131U-00	HOLDER 3	1	
18	93108-23010	OIL SEAL	1	
19	93210-27778	O-RING	2	
20	2RH-1131M-00	COVER	1	
21	91311-05010	BOLT	2	
22	2RH-1131R-00	CAP, seal	1	
23	91316-05012	BOLT	2	
24	29L-1132E-00	PULLEY 1	1	
25	97016-06020	BOLT	1	
26	92906-06100	WASHER, spring	1	
27	92906-06600	WASHER, plate	1	
28	29L-1133E-00	CABLE, pulley 1	2	

B2

FIG. 2 CRANKSHAFT. PISTON

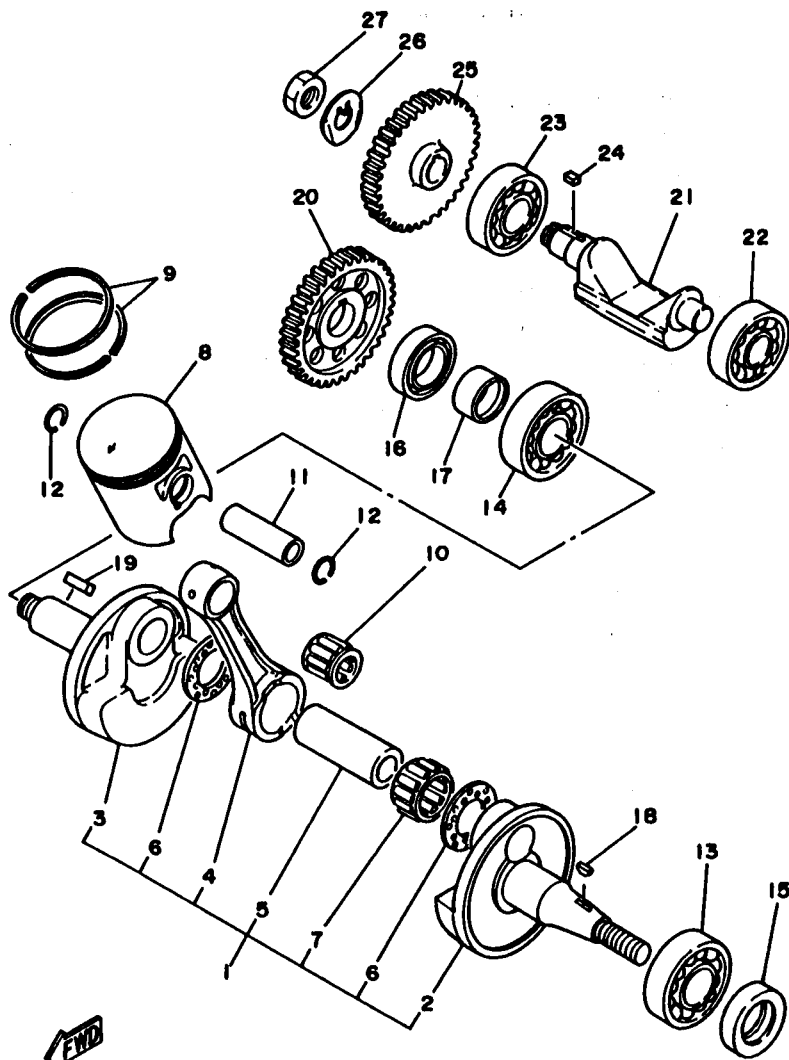


2RH300-7020

REF. NO.	PART NO.	DESCRIPTION	Q'TY	REMARKS
1	2RH-11400-00	CRANKSHAFT ASSY	1	
2	2RH-11412-00	.CRANK 1	1	
3	2RH-11422-00	.CRANK 2	1	
4	2RH-11651-00	.ROD, connecting	1	
5	37F-11681-00	.PIN, crank 1	1	
6	90209-22257	.WASHER	2	
7	93310-523T3	.BEARING, cylindrical	1	
8	2RH-11631-01-35	PISTON (STD)	1	
	2RH-11635-01	PISTON (0.25MM O/S)	1	AP
	2RH-11636-01	PISTON (0.50MM O/S)	1	AP
9	2MA-11610-01	PISTON RING SET (STD)	1	
	2MA-11610-11	PISTON RING SET (0.25MM O/S)	1	AP
	2MA-11610-21	PISTON RING SET (0.50MM O/S)	1	AP
10	93310-316H7	BEARING, cylindrical	1	
11	137-11633-00	PIN, piston	1	
12	93450-17129	CIRCLIP	2	
13	93306-20562	BEARING	1	
14	93306-30556	BEARING	1	
15	93102-25331	OIL SEAL	1	
16	93103-32099	OIL SEAL	1	
17	90387-202T9	COLLAR	1	
18	90280-03045	KEY, woodruff	1	
19	90282-05047	KEY, straight	1	
20	10V-11536-01	GEAR, drive	1	
21	2RH-11454-00	WEIGHT 1	1	
22	93306-30210	BEARING	1	
23	93306-20335	BEARING	1	
24	90282-05058	KEY, straight	1	

B3

FIG. 2 CRANKSHAFT. PISTON

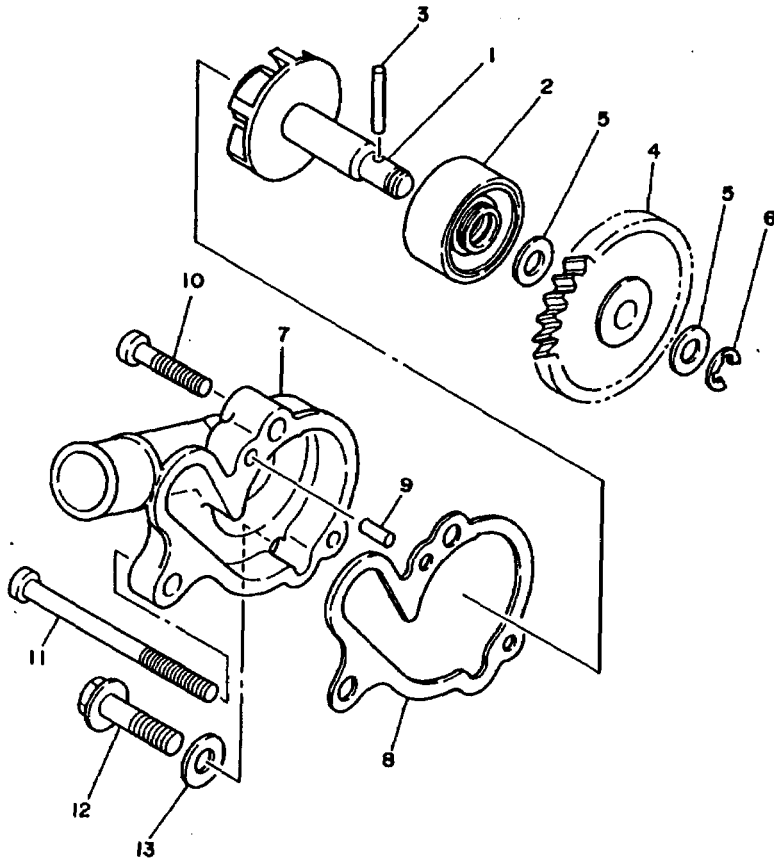


REF. NO.	PART NO.	DESCRIPTION	Q'TY	REMARKS
25	55K-11530-00	BALANCER WIEGHT GEAR COMP. (43T)	1	
26	90215-12272	WASHER, Lock	1	
27	90170-12370	NUT	1	

 2RH300-7020

B4

FIG. 3 WATER PUMP



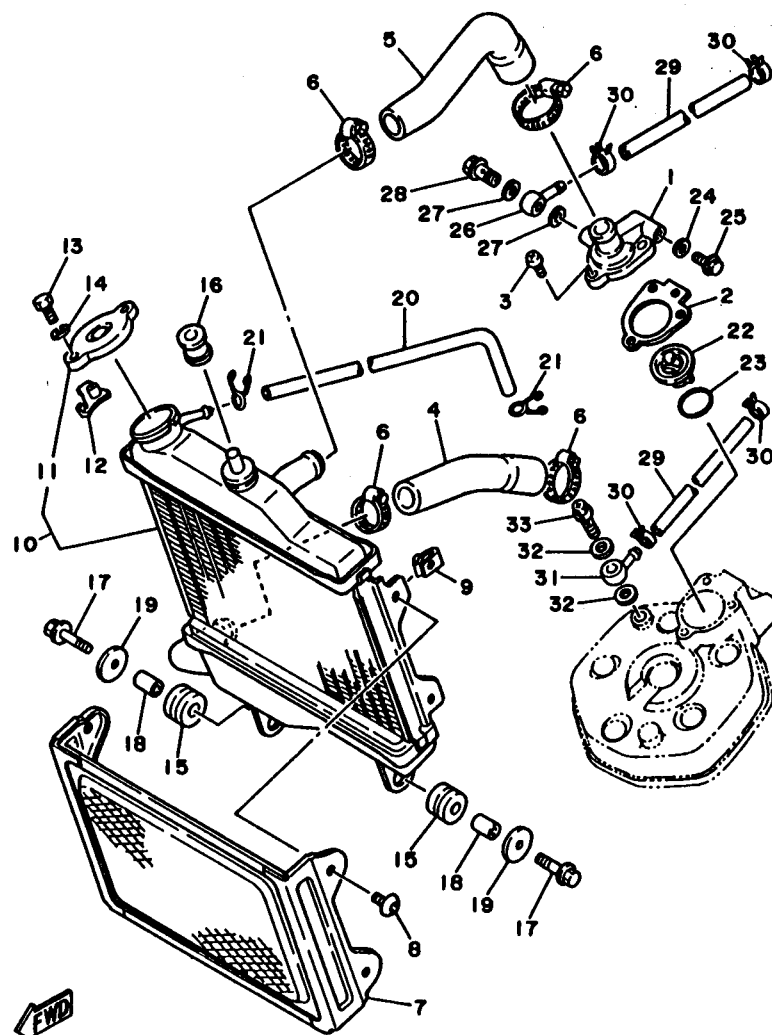
REF. NO.	PART NO.	DESCRIPTION	Q'TY	REMARKS
1	36F-12450-00	IMPELLER SHAFT ASSY	1	
2	93103-10147	OIL SEAL	1	
3	93603-22028	PIN, dowel	1	
4	2RH-12459-00	GEAR, impeller shaft	1	
5	90201-08512	WASHER, plate	2	
6	99080-07600	CIRCLIP	1	
7	2RH-12422-00	COVER, housing	1	
8	2RH-12428-00	GASKET, housing cover 2	1	
9	93604-10011	PIN, dowel	2	
10	98506-06025	SCREW, pan head	1	
11	92506-06070	SCREW, pan head	1	
12	95816-06025	BOLT, flange	1	
13	90430-06166	GASKET	1	



2RH300-7030

B5

FIG. 4 RADIATOR. HOSE



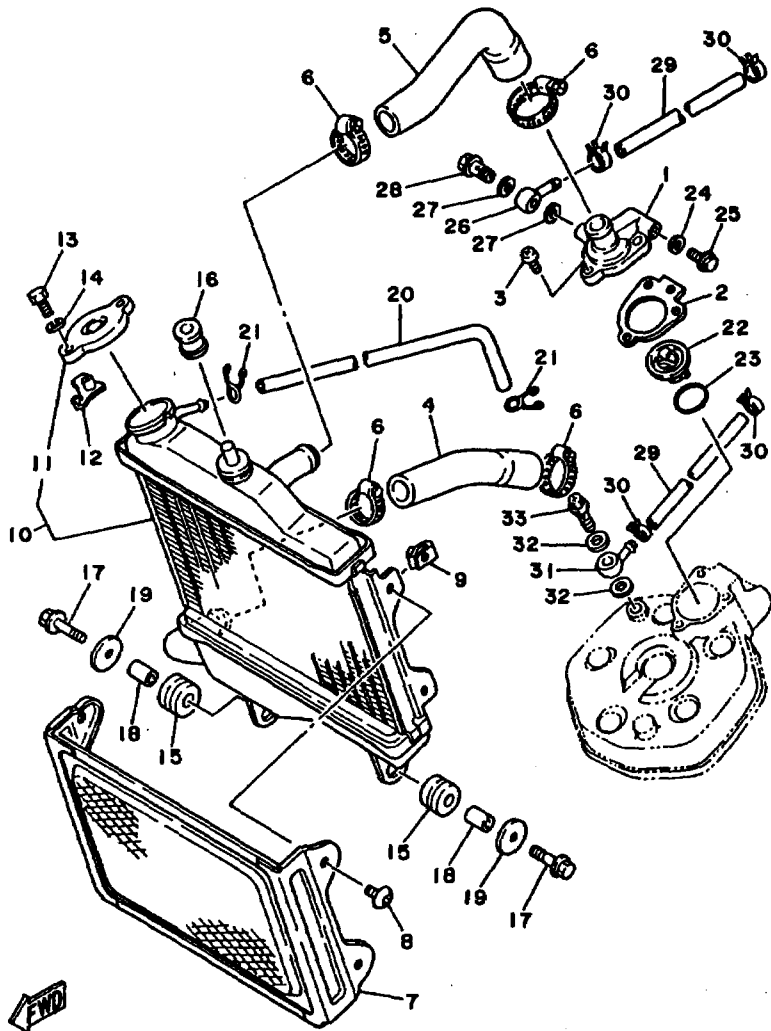
3TY1010-0040

REF. NO.	PART NO.	DESCRIPTION	Q'TY	REMARKS
1	2RH-12413-00	COVER, thermostat	1	
2	2RH-12414-00	GASKET, cover	1	
3	92506-06016	SCREW, pan head	3	
4	2RH-12481-00	PIPE 1	1	
5	2RH-12482-00	PIPE 2	1	
6	90450-28014	HOSE CLAMP ASSY	4	
7	2RH-12498-00	PROTECTOR	1	
8	90110-05079	BOLT, hexagon socket head	4	
9	90183-05044	NUT, spring	4	
10	2RH-12460-00	RADIATOR ASSY	1	
11	1KT-12462-00	.CAP, radiator	1	
12	1KT-12437-00	STOPPER	1	
13	97006-05012	BOLT	1	
14	92906-05100	WASHER, spring	1	
15	90480-15363	GROMMET	2	
16	90480-16284	GROMMET	1	
17	95816-06025	BOLT, flange	2	
18	90387-07392	COLLAR	2	
19	90201-060A3	WASHER, plate	2	
20	2RH-12483-00	PIPE 3	1	
21	90467-09006	CLIP	2	
22	34X-12411-00	THERMOSTAT	1	
23	93210-27194	O-RING	1	
24	90430-06166	GASKET	1	
25	95826-06020	BOLT, flange	1	
26	90405-06037	UNION	1	
27	90430-06166	GASKET	2	
28	90401-06115	BOLT, union	1	

B6

FIG. 4 RADIATOR HOSE

REF. NO.	PART NO.	DESCRIPTION	Q'TY	REMARKS
29	2RH-12484-00	PIPE 4	2	
30	90467-10035	CLIP	4	
31	90405-06037	UNION	1	
32	90430-06166	GASKET	2	
33	90401-06115	BOLT, union	1	



3TY1010-0040

B7

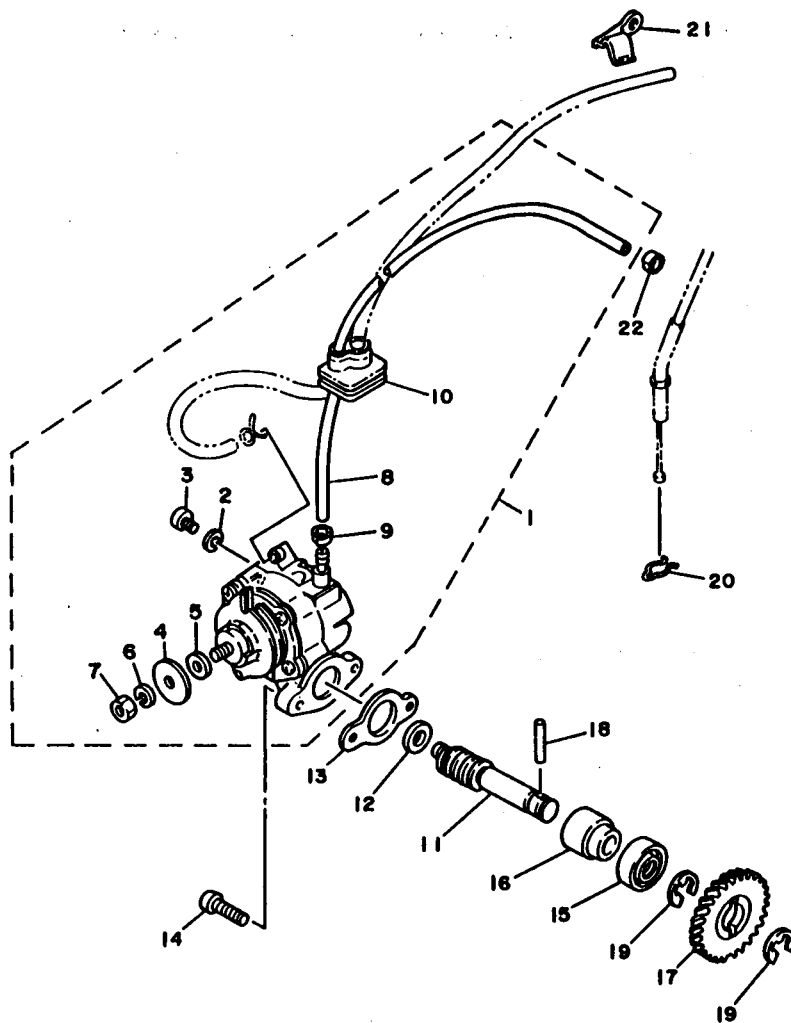


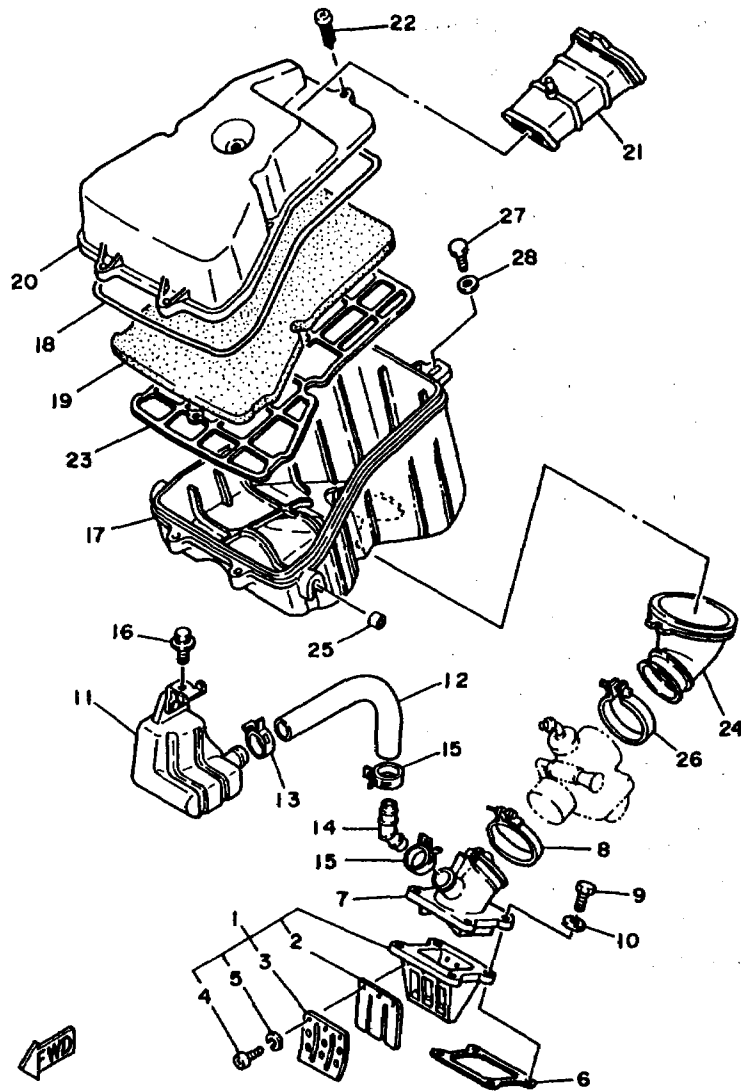
FIG. 5 OIL PUMP

REF. NO.	PART NO.	DESCRIPTION	Q'TY	REMARKS
1	2RH-13101-00	OIL PUMP ASSY	1	
2	90430-04004	.GASKET	1	
3	98901-04008	.SCREW, blind	1	
4	137-13138-01	.PLATE, adjusting	1	
5	137-13137-00-03	.SHIM (0.3T)	1	UR
	137-13137-00-05	.SHIM (0.5T)	1	UR
	137-13137-00-10	.SHIM (1.0T)	1	UR
6	92901-05100	.WASHER, spring	1	
7	95303-05600	.NUT	1	
8	90445-053F3	.HOSE	1	
9	90468-02033	.CLIP	1	
10	186-13174-00	.HOLDER, oil pipe	1	
11	55K-13175-01	SHAFT, worm	1	
12	90201-08624	WASHER, plate	1	
13	8Y0-13116-01	GASKET, pump case	1	
14	98501-05016	SCREW, pan head	2	
15	93101-10090	OIL SEAL	1	
16	1E7-13176-00	METAL, worm shaft outer	1	
17	10V-13178-01	GEAR, pump drive	1	
18	93603-22028	PIN, dowel	1	
19	93430-08036	CIRCLIP	2	
20	90468-08086	CLIP	1	
21	367-13174-00	HOLDER, oil pipe	1	
22	90468-02033	CLIP	1	



2RH300-7050

B8

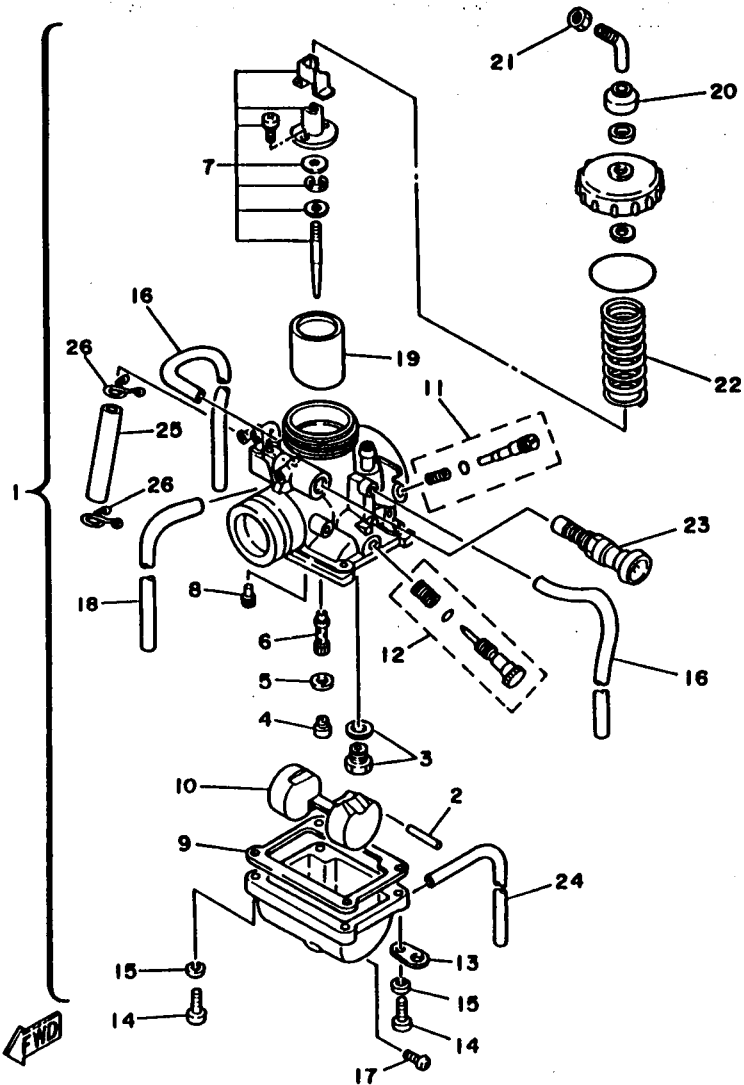


2RH300-7060

FIG. 6 INTAKE

REF. NO.	PART NO.	DESCRIPTION	Q'TY	REMARKS
1	1KT-13610-00	REED VALVE ASSY	1	
2	1KT-13613-00	.REED, valve	2	
3	1KT-13616-00	.STOPPER, reed valve	2	
4	98501-03008	.SCREW, pan head	6	
5	92990-03100	.WASHER, spring	6	
6	1KT-13621-00	GASKET, valve seat	1	
7	2RH-13565-00	JOINT, carburetor	1	
8	90450-44046	HOSE CLAMP ASSY	1	
9	97016-06025	BOLT	4	
10	92906-06600	WASHER, plate	4	
11	2RH-13580-00	AIR CHAMBER ASSY	1	
12	2RH-13584-00	PIPE, intake manifold	1	
13	90467-21058	CLIP	1	
14	1GU-13595-00	JOINT	1	
15	90467-20050	CLIP	2	
16	90119-06056	BOLT, with washer	1	
17	2RH-14411-00	CASE, air cleaner 1	1	
18	1VJ-14462-00	SEAL	1	
19	2RH-14451-00	ELEMENT, air cleaner	1	
20	2RH-14412-01	CAP, cleaner case 1	1	
21	1KT-14437-00	DUCT	1	
22	97780-50525	SCREW, tapping	5	
23	2RH-14472-00	PLATE, element	1	
24	2RH-14453-00	JOINT, air cleaner 1	1	
25	90445-12718	HOSE	2	
26	90460-49058	CLAMP, hose	1	
27	97313-06016	BOLT	1	
28	90201-06M02	WASHER, plate	1	

B9



2RH300-7070

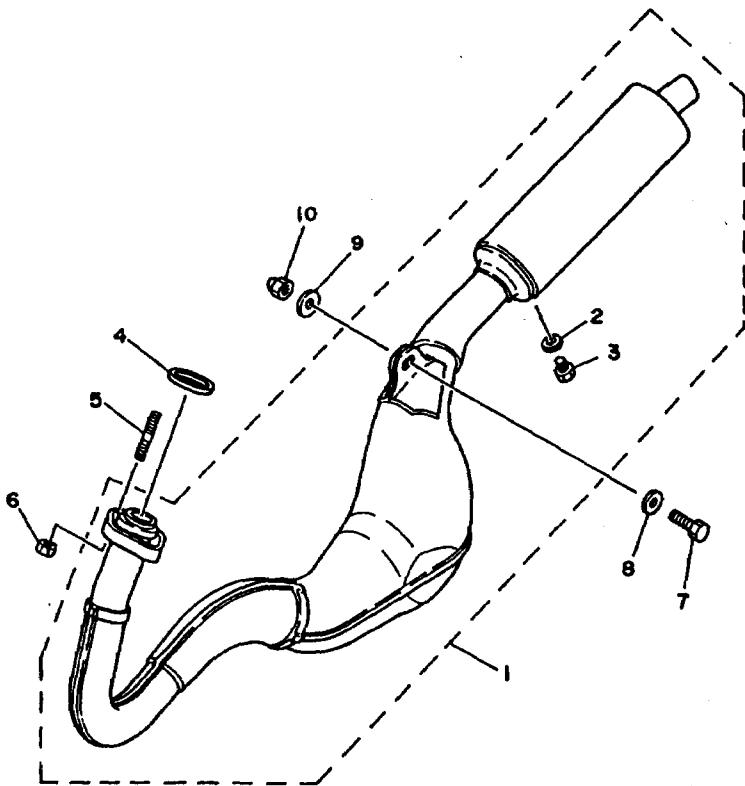
FIG. 7 CARBURETOR

REF. NO.	PART NO.	DESCRIPTION	Q'TY	REMARKS
1	2RH-14101-00	CARBURETOR ASSY 1	1	
2	537-14186-00	.PIN, float	1	
3	37F-14107-25	.NEEDLE VALVE SET	1	
4	137-14143-36	.JET, main (#180)	1	
5	137-14153-00	.WASHER, main jet	1	
6	1GU-14141-46	.NOZZLE, main	1	
7	2RH-1490J-00	.NEEDLE SET	1	
8	193-14142-22	.JET, pilot (#22.5)	1	
9	304-14184-00	.GASKET, float chamber	1	
10	314-14185-00	.FLOAT	1	
11	10W-14104-00	.AIR SCREW SET	1	
12	31J-14103-00	.THROTTLE SCREW SET	1	
13	132-14146-00	.PLATE	2	
14	98511-04016	.SCREW, pan head	4	
15	92902-04100	.WASHER, spring	4	
16	183-14197-01	.PIPE	2	
17	12R-14191-00	.PLUG, drain	1	
18	1GU-14197-00	.PIPE	1	
19	2RH-14112-20	.VALVE, throttle 1	1	
20	3X3-14169-00	.CAP	1	
21	802-14161-00	.NUT, cable adjusting	1	
22	1GU-14131-00	.SPRING, throttle valve	1	
23	2AL-14171-00	.PLUNGER, starter	1	
24	90445-084E3	.HOSE	1	
25	51L-14987-00	.HOSE	1	
26	90467-10008	.CLIP	2	

B10

FIG. 8 EXHAUST

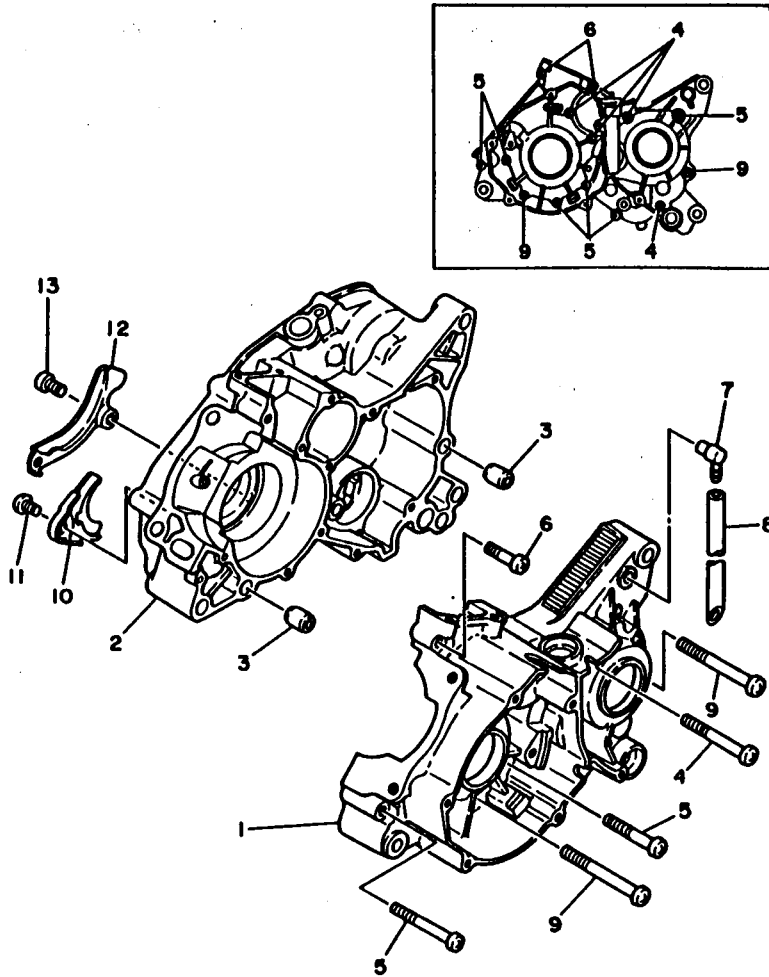
REF. NO.	PART NO.	DESCRIPTION	Q'TY	REMARKS
1	2RH-14710-00	MUFFLER ASSY 1	1	
2	92906-06600	WASHER, plate	1	
3	90101-06576	BOLT	1	
4	152-14613-00	GASKET, exhaust pipe	1	
5	90116-08042	BOLT, stud	2	
6	95303-08600	NUT	2	
7	90101-08461	BOLT	1	
8	90201-087F0	WASHER, plate	1	
9	90201-083A6	WASHER, plate	1	
10	90176-08026	NUT, crown	1	



2RH300-7080

B11

FIG. 9 CRANKCASE



REF. NO.	PART NO.	DESCRIPTION	Q'TY	REMARKS
1	2RH-15111-01	CRANKCASE 1	1	
2	2RH-15121-00	CRANKCASE 2	1	
3	99510-12016	PIN, dowel	2	
4	92501-06060	SCREW, pan head	4	
5	98503-06045	SCREW, pan head	6	
6	92501-06030	SCREW, pan head	2	
7	583-15371-00	BREATHER	1	
8	90446-07321	HOSE	1	
9	98501-06055	SCREW, pan head	2	
10	37F-15128-00	HOLDER	1	
11	92501-08010	SCREW, pan head	1	
12	2RH-15492-00	COVER	1	
13	98501-06012	SCREW, pan head	2	

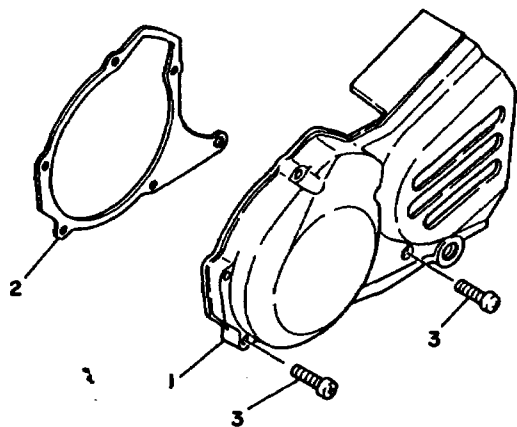
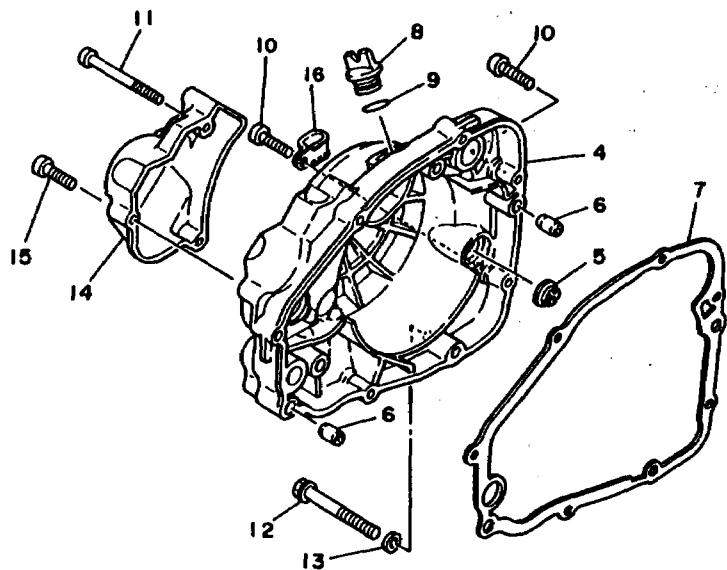


3PE1352-9090

B12

FIG. 10 CRANKCASE COVER 1

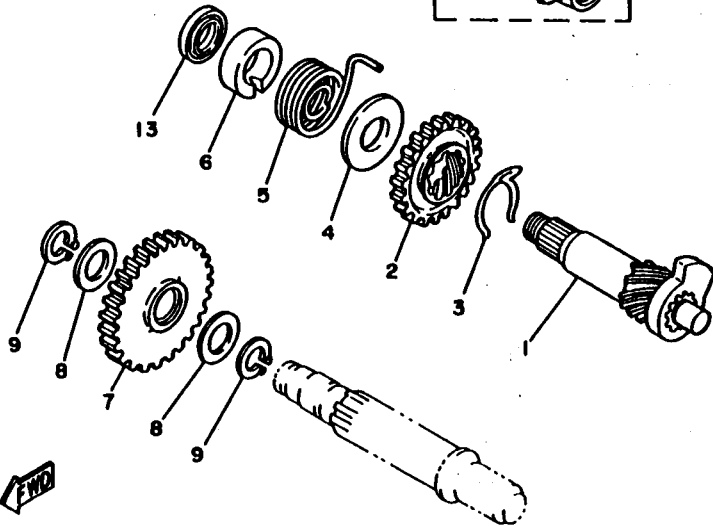
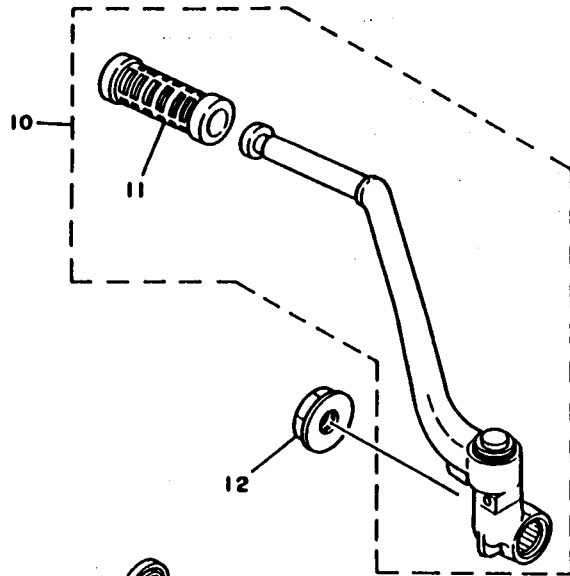
REF. NO.	PART NO.	DESCRIPTION	Q'TY	REMARKS
1	2RH-15411-00	COVER, crankcase 1	1	
2	2RH-15455-00	GASKET 1	1	
3	92516-06030	SCREW, pan head	6	
4	2RH-15421-00	COVER, crankcase 2	1	
5	3Y1-15361-00	GAUGE, level	1	
6	99530-10014	PIN, dowel	2	
7	2RH-15451-00	GASKET, crankcase cover 1	1	
8	1RG-15363-00	PLUG, oil	1	
9	93210-19123	O-RING	1	
10	92516-06030	SCREW, pan head	5	
11	92506-06070	SCREW, pan head	1	
12	95806-08070	BOLT, flange	1	
13	90201-08087	WASHER, plate	1	
14	2RH-15416-00	COVER, oil pump	1	
15	98506-06025	SCREW, pan head	2	
16	90461-06103	CLAMP	1	



2RH300-7100

B13

FIG. 11 STARTER



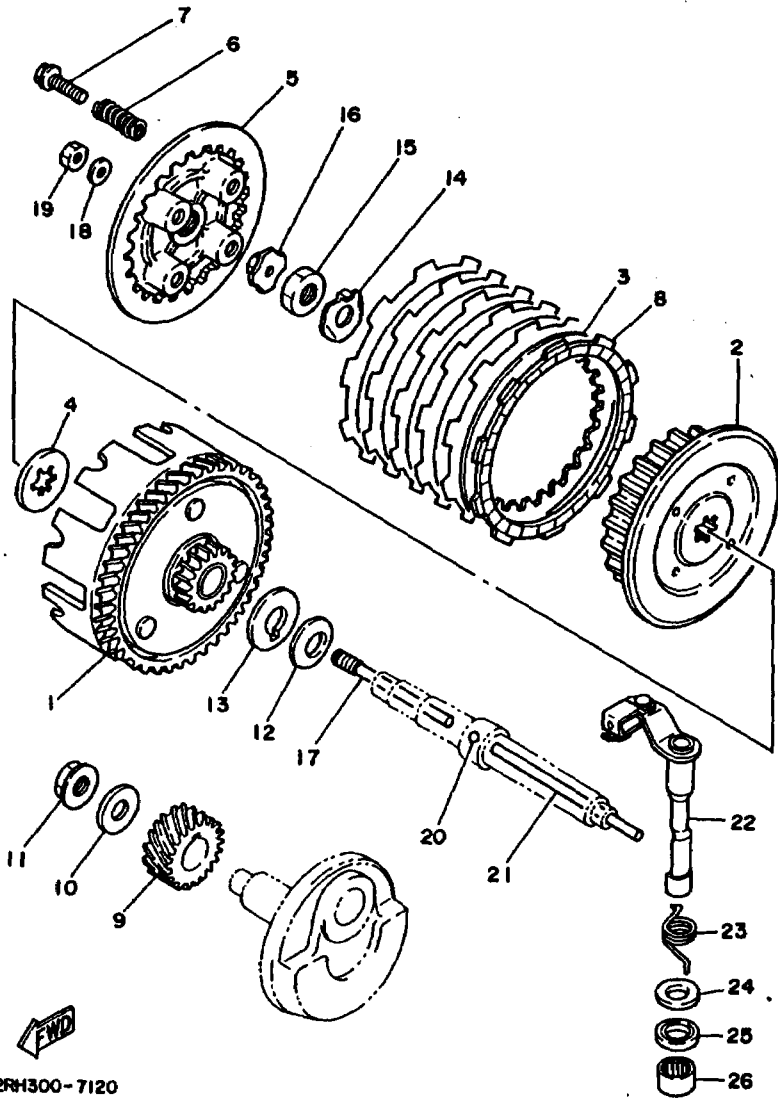
2RH300-7110

REF. NO.	PART NO.	DESCRIPTION	Q'TY	REMARKS
1	2RH-15660-00	KICK AXLE ASSY	1	
2	10V-15641-00	GEAR, kick (23T)	1	
3	90468-26048	CLIP	1	
4	90201-200J7	WASHER, plate	1	
5	90508-26667	SPRING, torsion	1	
6	10V-15666-00	SPACER	1	
7	10V-15651-00	GEAR, kick idle (29T)	1	
8	90201-154E8	WASHER, plate	2	
9	93440-15012	CIRCLIP	2	
10	2RH-15620-00	KICK CRANK ASSY	1	
11	156-15618-01	COVER, kick lever	1	
12	90179-12374	NUT	1	
13	93102-20309	OIL SEAL	1	

B14

FIG. 12 CLUTCH

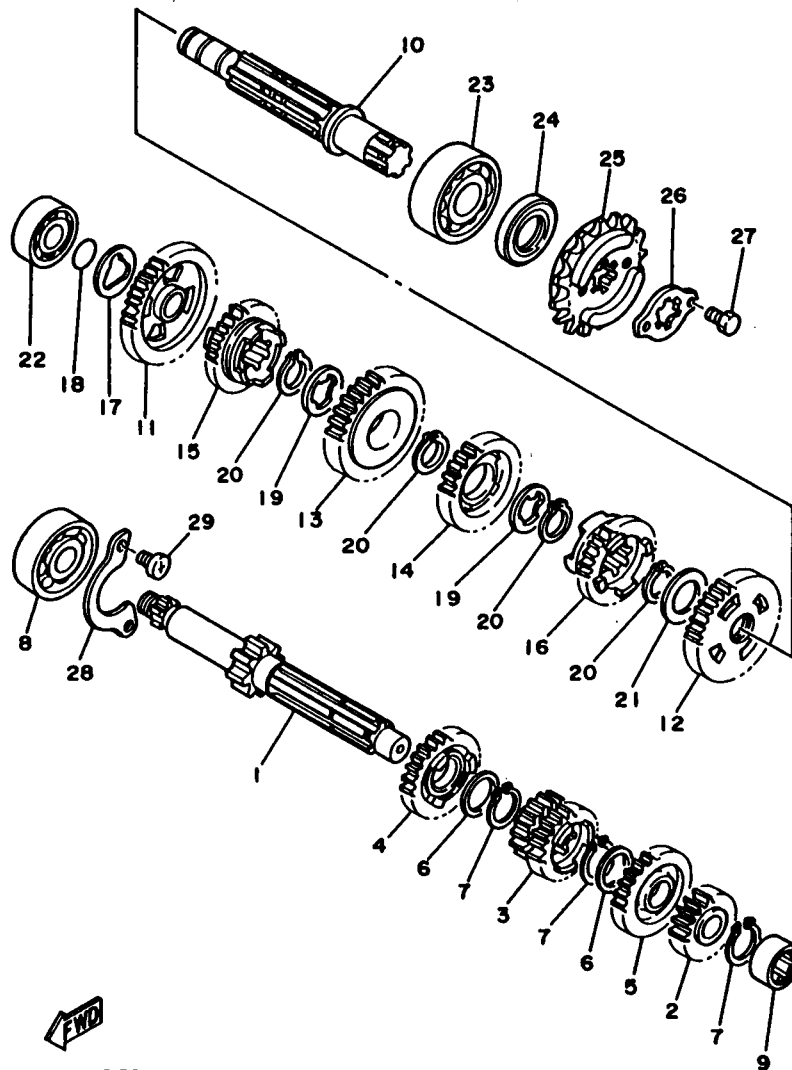
REF. NO.	PART NO.	DESCRIPTION	Q'TY	REMARKS
1	2JK-16150-00	PRIMARY DRIVEN GEAR COMP. (71T)	1	
2	4Y2-16371-00	BOSS, clutch	1	
3	1V1-16324-00	PLATE, clutch 1	5	
4	4V0-16154-00	PLATE, thrust 1	1	
5	10V-16351-00	PLATE, pressure 1	1	
6	90501-20568	SPRING, compression	4	
7	90119-05001	BOLT, with washer	4	
8	21V-16321-00	PLATE, friction	6	
9	2A6-16111-00	GEAR, primary drive (22T)	1	
10	90201-120E8	WASHER, plate	1	
11	90179-12244	NUT	1	
12	90208-17032	WASHER, conical spring	1	
13	37F-16154-00	PLATE, thrust 1	1	
14	90215-12271	WASHER, lock	1	
15	90170-12370	NUT	1	
16	30X-16358-00	PLATE, push	1	
17	1W1-16356-01	ROD, push 1	1	
18	92901-06200	WASHER, plain	1	
19	95303-06600	NUT	1	
20	93503-16010	BALL	1	
21	3R1-16357-00	ROD, push 2	1	
22	37F-16380-01	PUSH LEVER ASSY	1	
23	90508-20555	SPRING, torsion	1	
24	90201-14217	WASHER, plate	1	
25	93104-14004	OIL SEAL	1	
26	93315-21429	BEARING, cylindrical	1	



2RH300-7120

B15

FIG. 13 TRANSMISSION

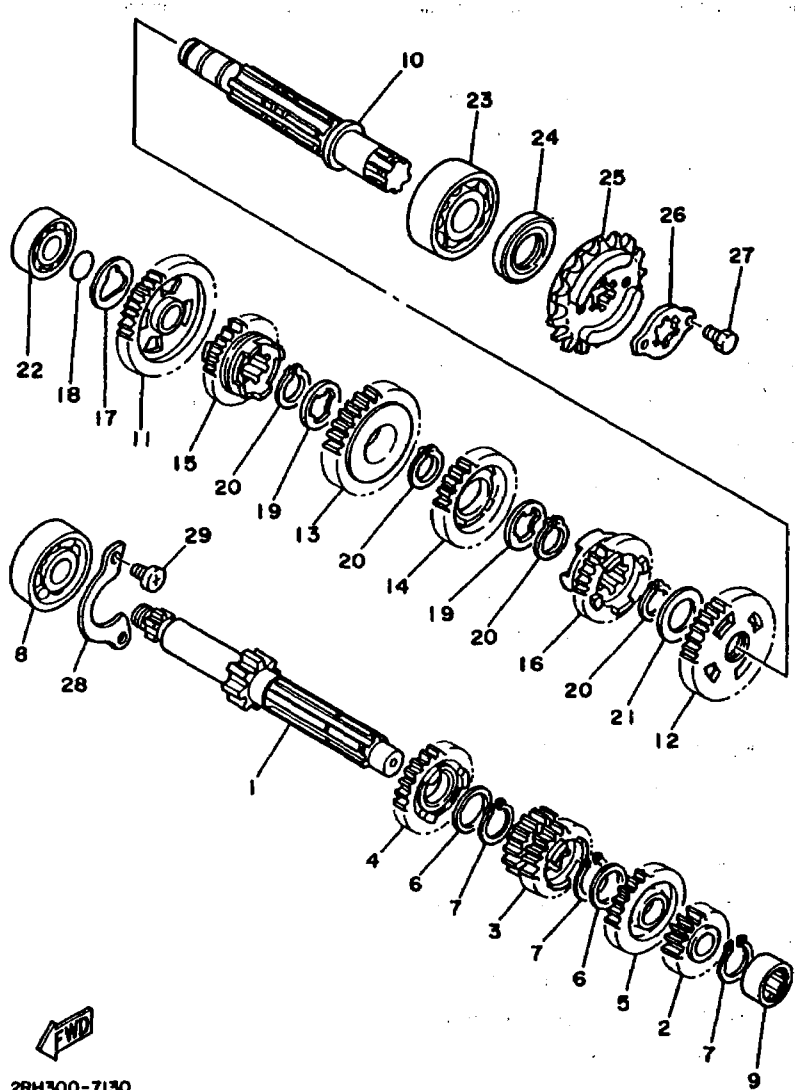


2RH300-7130

REF. NO.	PART NO.	DESCRIPTION	Q'TY	REMARKS
1	2JK-17411-00	AXLE, main (12T)	1	
2	2RH-17121-00	GEAR, 2nd pinion (16T)	1	
3	2RH-17131-01	GEAR, 3rd/4th pinion (19T-21T)	1	
4	2RH-17151-01	GEAR, 5th pinion (23T)	1	
5	2RH-17161-01	GEAR, 6th pinion (24T)	1	
6	90201-20266	WASHER, plate (1.0T)	2	
7	93410-20038	CIRCLIP	3	
8	93306-30309	BEARING (B6303ZZ)	1	
9	93311-31567	BEARING, cylindrical	1	
10	2RH-17421-00	AXLE, drive	1	
11	2RH-17211-00	GEAR, 1st wheel (34T)	1	
12	2RH-17221-00	GEAR, 2nd wheel (29T)	1	
13	2RH-17231-00	GEAR, 3rd wheel (26T)	1	
14	2RH-17241-00	GEAR, 4th wheel (24T)	1	
15	2RH-17251-01	GEAR, 5th wheel (23T)	1	
16	2RH-17261-01	GEAR, 6th wheel (22T)	1	
17	90209-15270	WASHER	1	
18	93210-12154	O-RING	1	
19	90209-18135	WASHER	2	
20	93410-22039	CIRCLIP	4	
21	90201-22555	WASHER, plate	1	
22	93306-20201	BEARING (B6202)	1	
23	93306-30421	BEARING (B6304C3)	1	
24	93102-20143	OIL SEAL	1	
25	34Y-17460-00	SPROCKET, drive 16T (34Y1746161)	1	
26	5H0-17456-00	HOLDER, sprocket	1	
27	97011-06010	BOLT	2	
28	55K-17471-00	PLATE, cover	1	

C2

FIG. 13 TRANSMISSION



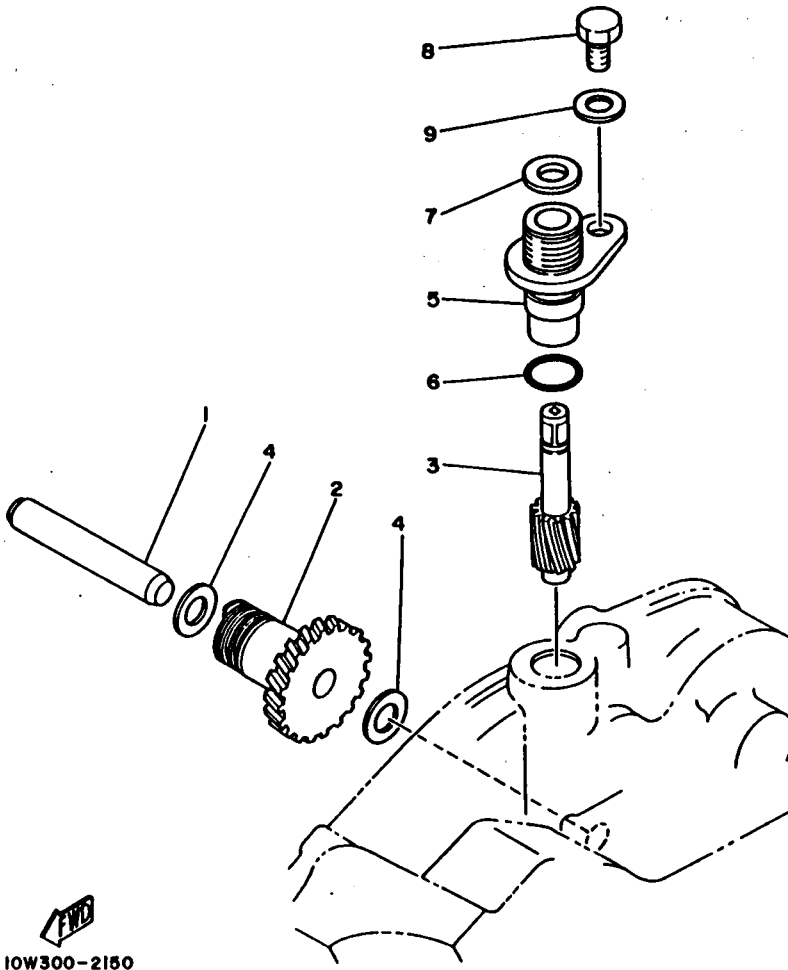
REF. NO.	PART NO.	DESCRIPTION	Q'TY	REMARKS
29	98501-06012	SCREW, pan head	2	

FWD
2RH300-7130

C3

FIG. 14 TACHOMETER GEAR

REF. NO.	PART NO.	DESCRIPTION	Q'TY	REMARKS
1	17F-17861-00	AXLE, drive gear	1	
2	17F-17831-00	GEAR, drive	1	
3	17F-17841-00	GEAR, driven	1	
4	90201-087H6	WASHER, plate	2	
5	4L0-17811-00	HOUSING, tachometer gear	1	
6	93210-12327	O-RING	1	
7	4L0-17818-00	GASKET	1	
8	97011-06010	BOLT	1	
9	92901-06600	WASHER, plate	1	

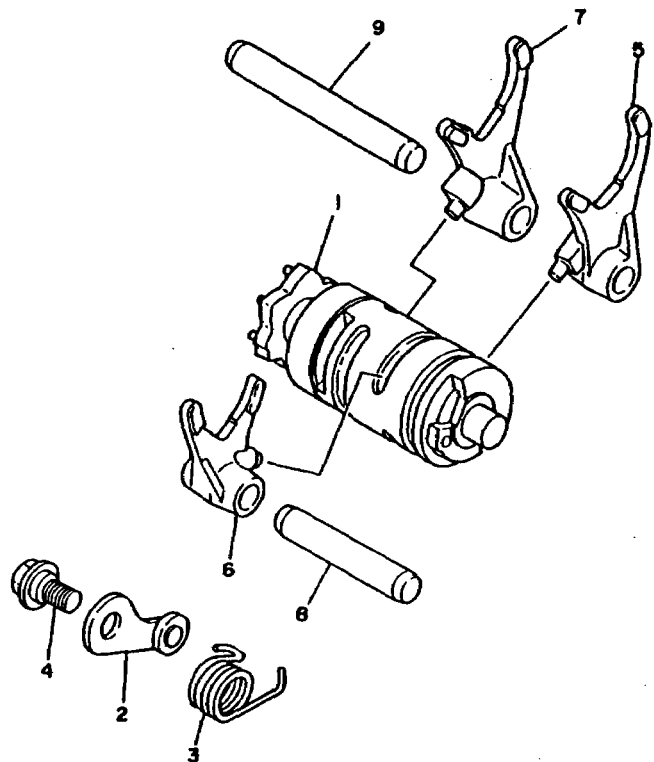



10W300-2150

C4

FIG. 15 SHIFT CAM. FORK

REF. NO.	PART NO.	DESCRIPTION	Q'TY	REMARKS
1	2RH-18540-10	SHIFT CAM ASSY	1	
2	3R4-18140-00	STOPPER LEVER ASSY	1	
3	90508-26561	SPRING, torsion	1	
4	90109-063F7	BOLT	1	
5	55K-18511-00	FORK, shift 1	1	
6	2RH-18512-00	FORK, shift 2	1	
7	55K-18513-00	FORK, shift 3	1	
8	55K-18531-00	BAR, shift fork guide 1	1	
9	2A6-18535-00	BAR, shift fork guide 2	1	



2RH300-7150

C5

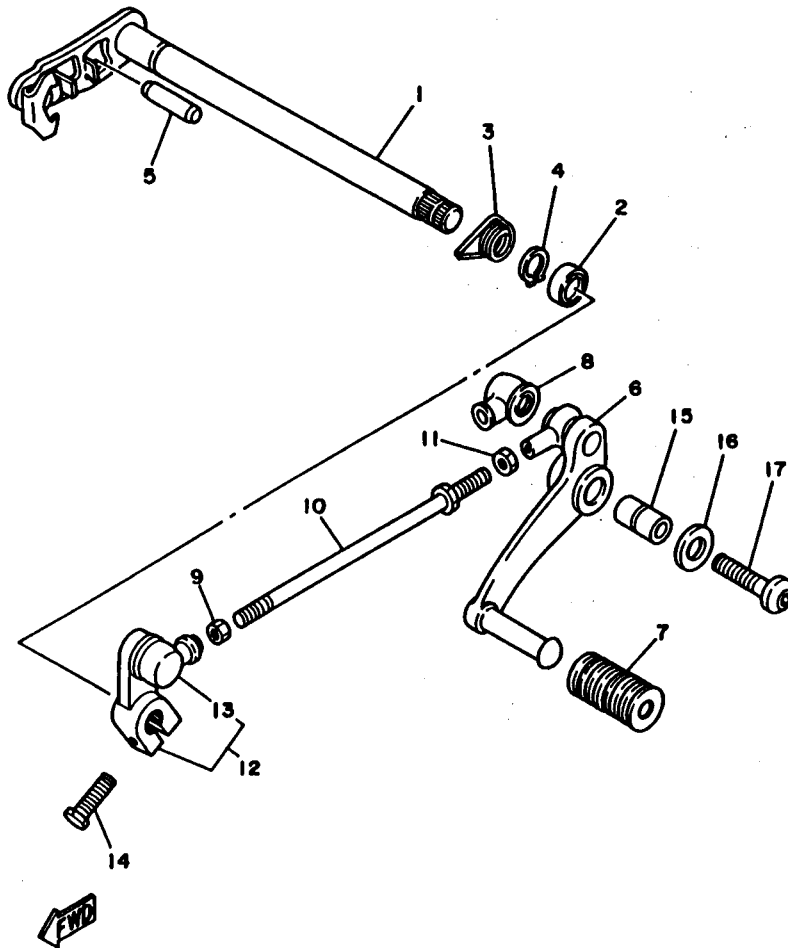


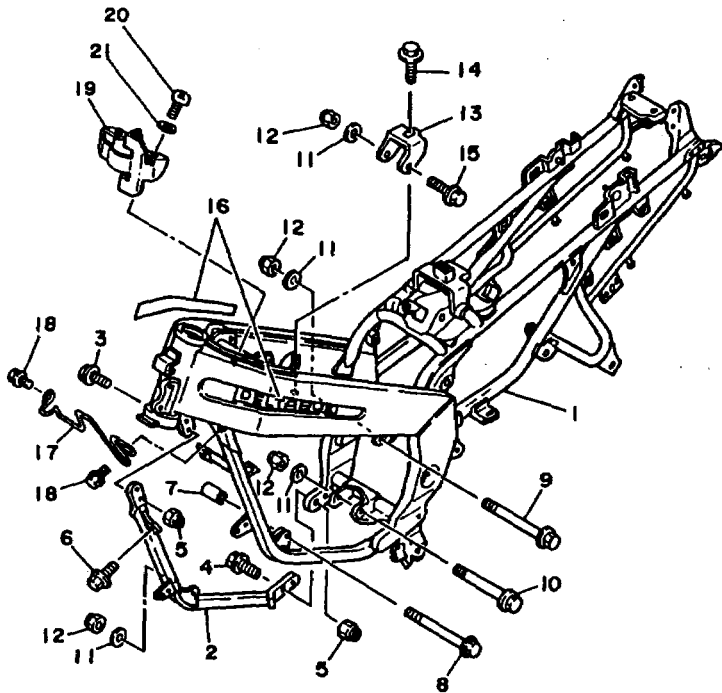
FIG. 16 SHIFT SHAFT

REF. NO.	PART NO.	DESCRIPTION	Q'TY	REMARKS
1	55K-18101-03	SHIFT SHAFT ASSY	1	
2	93101-12060	OIL SEAL	1	
3	90508-32642	SPRING, torsion	1	
4	99001-10600	CIRCLIP	1	
5	93608-30152	PIN, dowel	1	
6	2RH-18111-00	PEDAL, shift	1	
7	132-18113-01	COVER, shift pedal	1	
8	2H9-18154-00	COVER, dust	1	
9	90170-06289	NUT	1	
10	2RH-18115-00	ROD, shift	1	
11	95316-06700	NUT	1	
12	2RH-18112-02	ARM, shift	1	
13	2H9-18154-00	COVER, dust	1	
14	95826-06020	BOLT, flange	1	
15	90387-08725	COLLAR	1	
16	90201-081A6	WASHER, plate	1	
17	90109-083A8	BOLT	1	

2RH300-7180

C6

FIG. 17 FRAME



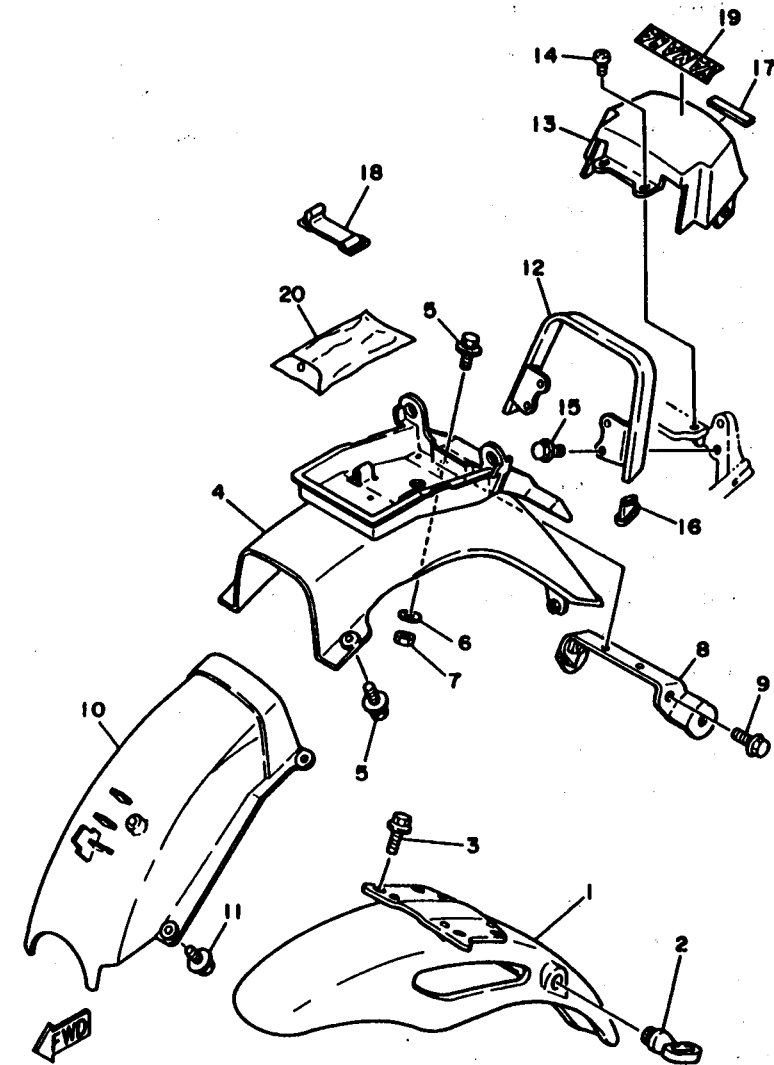
REF. NO.	PART NO.	DESCRIPTION	Q'TY	REMARKS
1	3PA-21110-00-35	FRAME COMP.	1	SILVER
2	2RH-21150-00-35	DOWN TUBE COMP.2	1	SILVER
3	91021-08025	BOLT, flange	2	
4	91021-08030	BOLT, flange	2	
5	95601-08200	NUT, self-locking	4	
6	95821-08016	BOLT, flange	1	
7	90387-082T8	COLLAR	1	
8	90105-08495	BOLT, washer based	1	
9	90105-08391	BOLT, washer based	1	
10	90105-08466	BOLT, washer based	1	
11	90201-08649	WASHER, plate	4	
12	90185-08054	NUT, self-locking	4	
13	2RH-2149F-00	STAY, engine protector 1	1	
14	95821-08016	BOLT, flange	1	
15	90105-08494	BOLT, washer based	1	
16	2RH-2118E-01	EMBLEM 1	2	
17	2RH-21288-00	GUIDE, cable	1	
18	95801-06012	BOLT, flange	2	
19	2RH-2135Y-00	BRACKET, ignition coil	1	
20	98502-06016	SCREW, pan head	2	
21	92990-06100	WASHER, spring	2	



2RH300-7170

C7

FIG. 18 FENDER



2RH300-7180

REF. NO.	PART NO.	DESCRIPTION	Q'TY	REMARKS
1	1GU-21510-00-GE	FRONT FENDER COMP.	1	UR-SILKY WHITE
	1GU-21510-00-KM	FRONT FENDER COMP.	1	UR NEW BLACK BLUE
	1GU-21510-00-NJ	FRONT FENDER COMP.	1	UR FARAWAY BLUE
2	1A8-21518-00	HOLDER, cable	1	
3	95023-06012	BOLT	4	
4	2RH-21610-00	REAR FENDER COMP.	1	
5	90119-06118	BOLT, with washer	4	
6	92901-06200	WASHER, plain	2	
7	95303-06600	NUT	2	
8	2RH-21645-00	STAY, rear	1	
9	95801-08012	BOLT, flange	2	
10	2RH-21629-00	GUARD, mud	1	
11	90119-06056	BOLT, with washer	2	
12	2RH-24773-00	HANDLE, seat	1	
13	2RH-21651-00-GE	COVER, rear fender	1	UR SILKY WHITE
	2RH-21651-00-KM	COVER, rear fender	1	UR NEW BLACK BLUE
	2RH-21651-00-NJ	COVER, rear fender	1	UR FARAWAY BLUE
14	98980-06016	SCREW, bind	2	
15	95811-06016	BOLT, flange	4	
16	2RH-26329-00	CAP, rubber	2	
17	3CV-28378-00	PAD	1	
18	47X-82131-00	BAND, battery	1	
19	99234-00020	EMBLEM, yamaha	1	UR FOR SW
	99231-00020	EMBLEM, yamaha	1	UR FOR FWB
	99236-00020	EMBLEM, yamaha	1	UR FOR NBB
20	2A6-W2810-00	TOOL KIT	1	

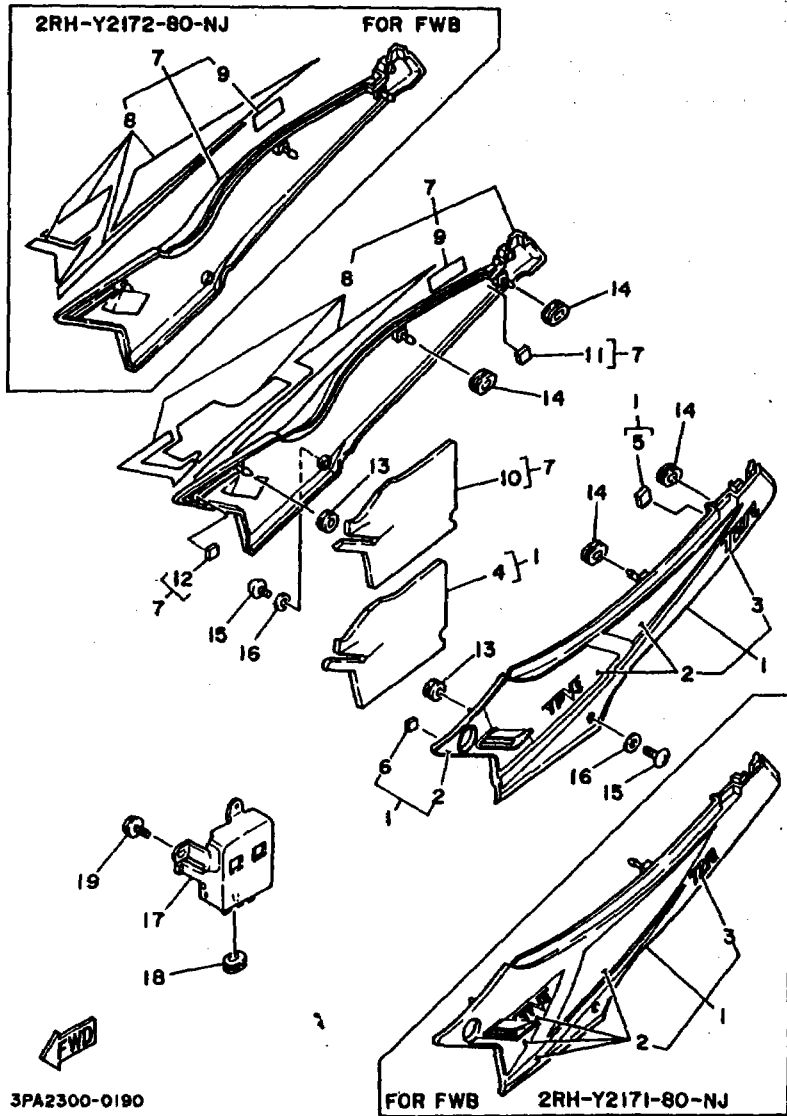
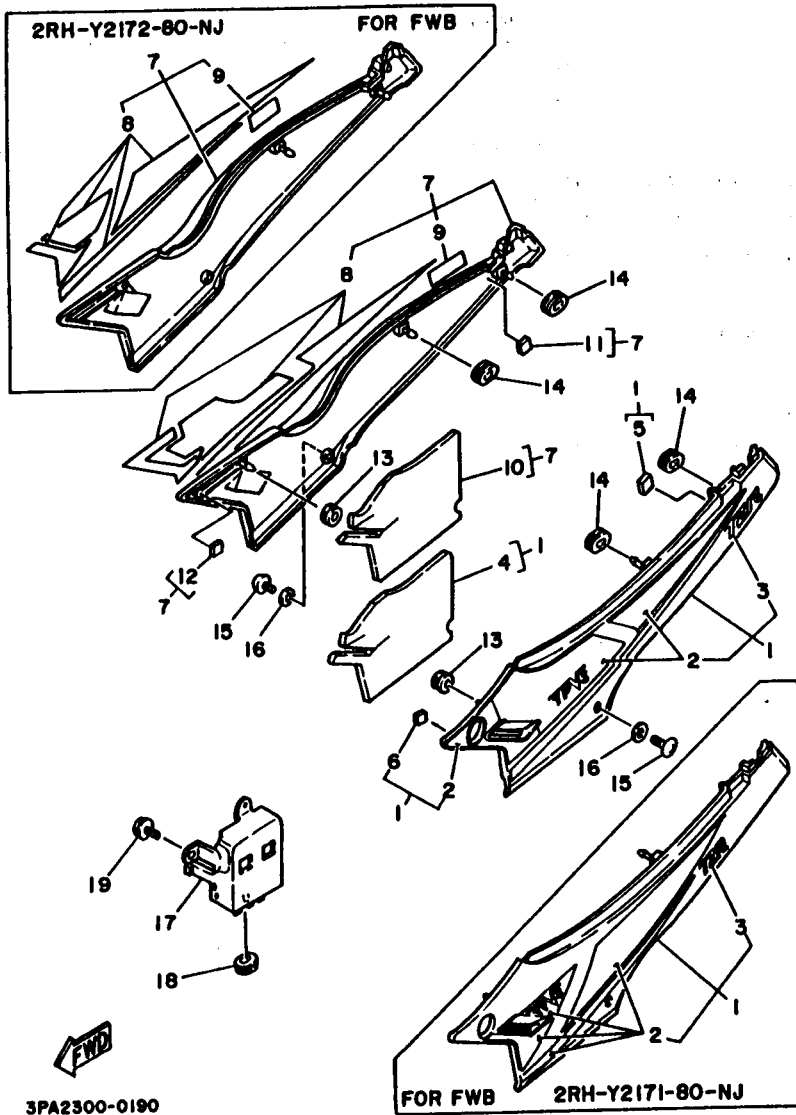


FIG. 19 SIDE COVER

REF. NO.	PART NO.	DESCRIPTION	Q'TY	REMARKS
1	2RH-Y2171-70-GE	COVER, side 1	1	UR SILKY WHITE
	2RH-Y2171-A0-KM	COVER, side 1	1	UR NEW BLACK BLUE
	2RH-Y2171-80-NJ	COVER, side 1	1	UR FARAWAY BLUE
2	3PA-2173L-20	.GRAPHIC SET 1	1	UR FOR SW
	3PA-2173L-30	.GRAPHIC SET 1	1	UR FOR FWB
	3PA-2173L-40	.GRAPHIC SET 1	1	UR FOR NBB
3	3PA-21737-00	.EMBLEM	1	UR FOR SW
	3PA-21737-10	.EMBLEM	1	UR FOR FWB
	3PA-21737-20	.EMBLEM	1	UR FOR NBB
4	2RH-2173M-00	.SEAL 3	1	
5	2RH-21747-00	.DAMPER	1	
6	34M-2139X-00	.DAMPER	1	
7	2RH-Y2172-70-GE	COVER, side 2	1	UR SILKY WHITE
	2RH-Y2172-B0-KM	COVER, side 2	1	UR NEW BLACK BLUE
	2RH-Y2172-80-NJ	COVER, side 2	1	UR FARAWAY BLUE
8	3PA-2174L-20	.GRAPHIC SET 2	1	UR FOR SW
	3PA-2174L-30	.GRAPHIC SET 2	1	UR FOR FWB
	3PA-2174L-40	.GRAPHIC SET 2	1	UR FOR NBB
9	3PA-21737-00	.EMBLEM	1	UR FOR SW
	3PA-21737-10	.EMBLEM	1	UR FOR FWB
	3PA-21737-20	.EMBLEM	1	UR FOR NBB
10	2RH-2173N-00	.SEAL 4	1	
11	2RH-21747-00	.DAMPER	1	
12	34M-2139X-00	.DAMPER	1	
13	90480-13426	GROMMET	2	
14	90480-01401	GROMMET	4	
15	90154-05001	SCREW, binding	2	
16	90201-06263	WASHER, plate	2	

C9

FIG. 19 SIDE COVER



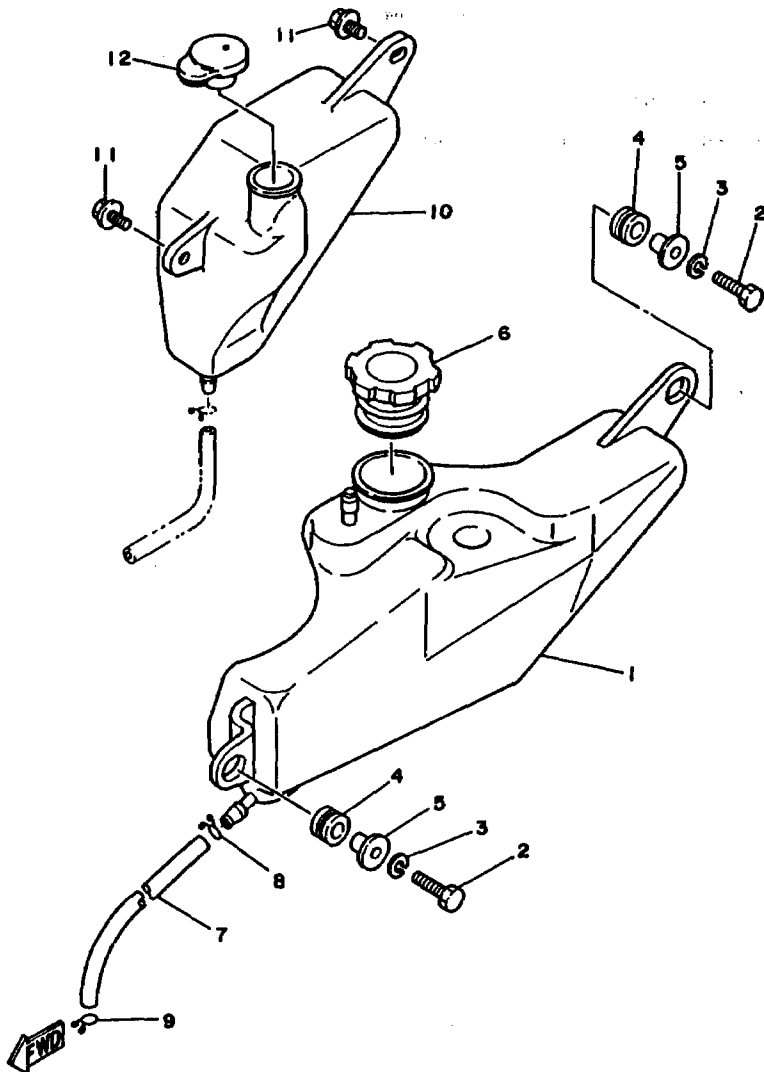
REF. NO.	PART NO.	DESCRIPTION	Q'TY	REMARKS
17	2RH-2177G-00	BOX, battery	1	
18	90480-01401	GROMMET	1	
19	90119-06044	BOLT, with washer	2	

3PA2300-0190

C10

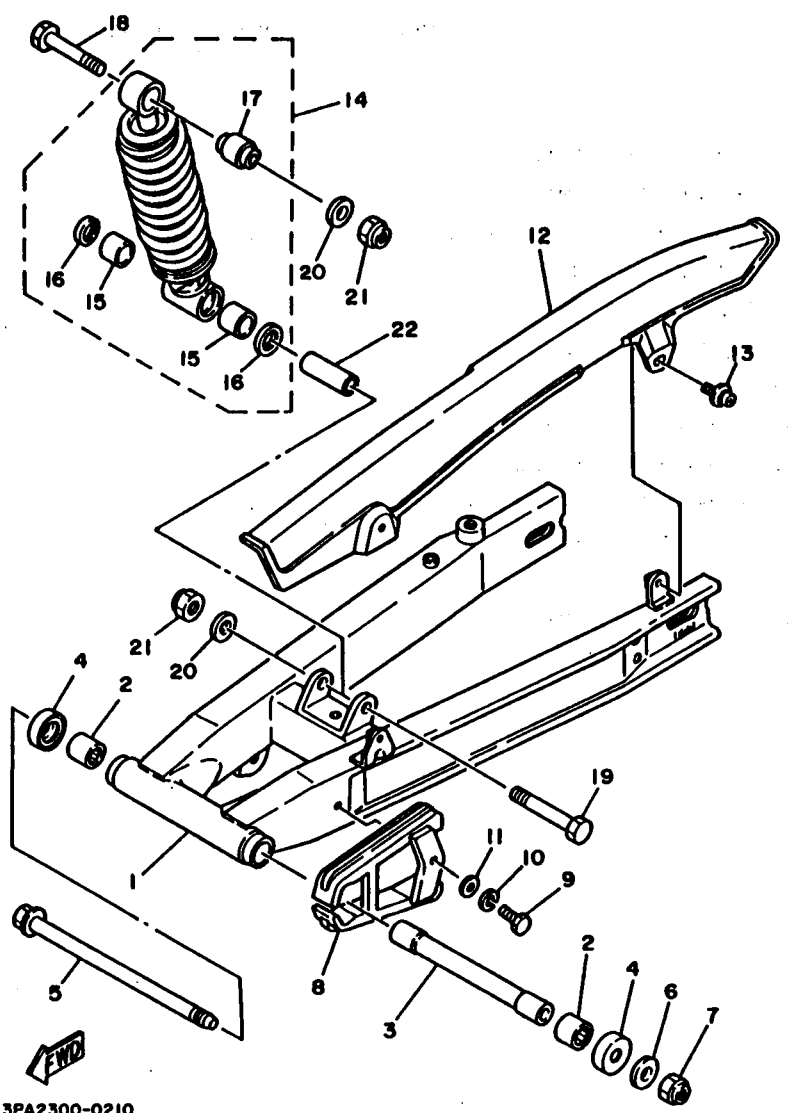
FIG. 20 OIL TANK

REF. NO.	PART NO.	DESCRIPTION	Q'TY	REMARKS
1	2RH-21751-00	TANK, oil	1	
2	97001-06025	BOLT	2	
3	92906-06100	WASHER, spring	2	
4	90480-14433	GROMMET	2	
5	90387-07391	COLLAR	2	
6	14T-21770-00	OIL TANK CAP ASSY	1	
7	90445-09111	HOSE	1	
8	90467-08003	CLIP	1	
9	90467-08003	CLIP	1	
10	2RH-21871-00	TANK, recovery	1	
11	90119-06044	BOLT, with washer	2	
12	4L0-21815-01	CAP	1	



2RH300-7200

C11



3PA2300-0210

FIG. 21 REAR ARM. SUSPENSION

REF. NO.	PART NO.	DESCRIPTION	Q'TY	REMARKS
1	3PA-22110-00-35	REAR ARM COMP.	1	SILVER
2	93315-31841	BEARING, cylindrical	2	
3	2RH-22184-00	BUSH	1	
4	401-22128-01	SEAL, guard	2	
5	34X-22141-00	SHAFT, pivot	1	
6	90201-12535	WASHER, plate	1	
7	90185-12046	NUT, self-locking	1	
8	2RH-22151-00	SEAL, guard	1	
9	97313-06016	BOLT	1	
10	92990-06100	WASHER, spring	1	
11	90201-06067	WASHER, plate	1	
12	2RH-22311-00	CASE, chain	1	
13	90159-06084	SCREW, with washer	2	
14	3PA-22210-00	SHOCK ABSORBER ASSY, rear	1	
15	90384-18157	BUSH, bimetal formed	2	
16	93109-18020	OIL SEAL	2	
17	34L-22216-00	BUSH, rear shock absorber	1	
18	90101-12558	BOLT	1	
19	90101-12676	BOLT	1	
20	90201-12535	WASHER, plate	2	
21	95601-12100	NUT, u	2	
22	90387-124H0	COLLAR	1	

C12

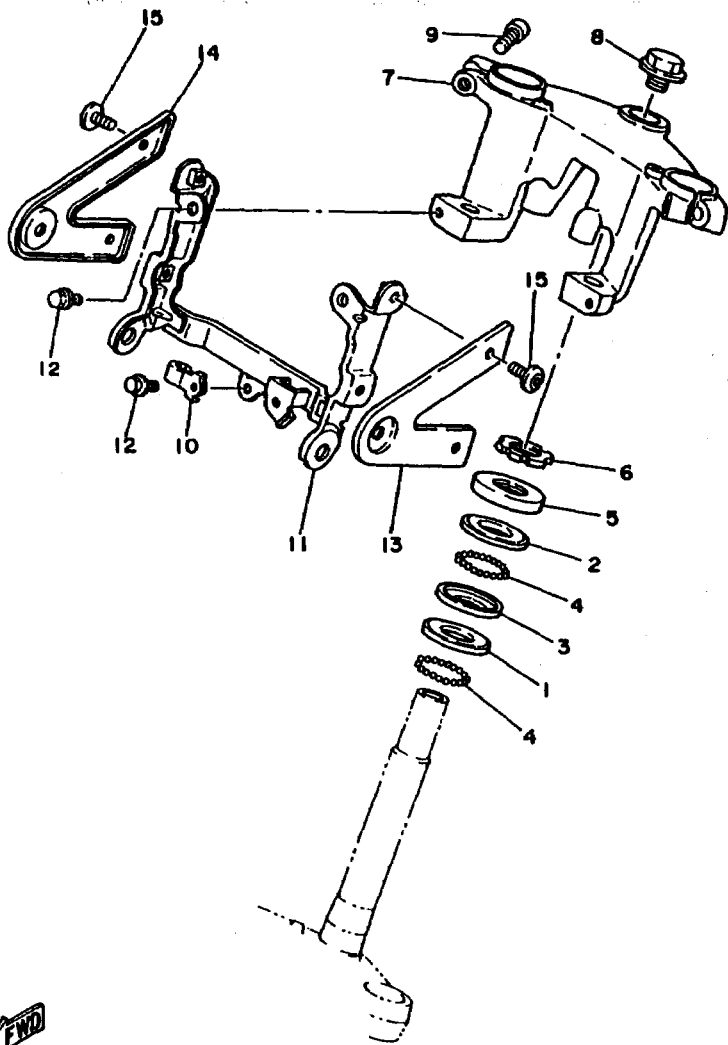


FIG. 22 STEERING

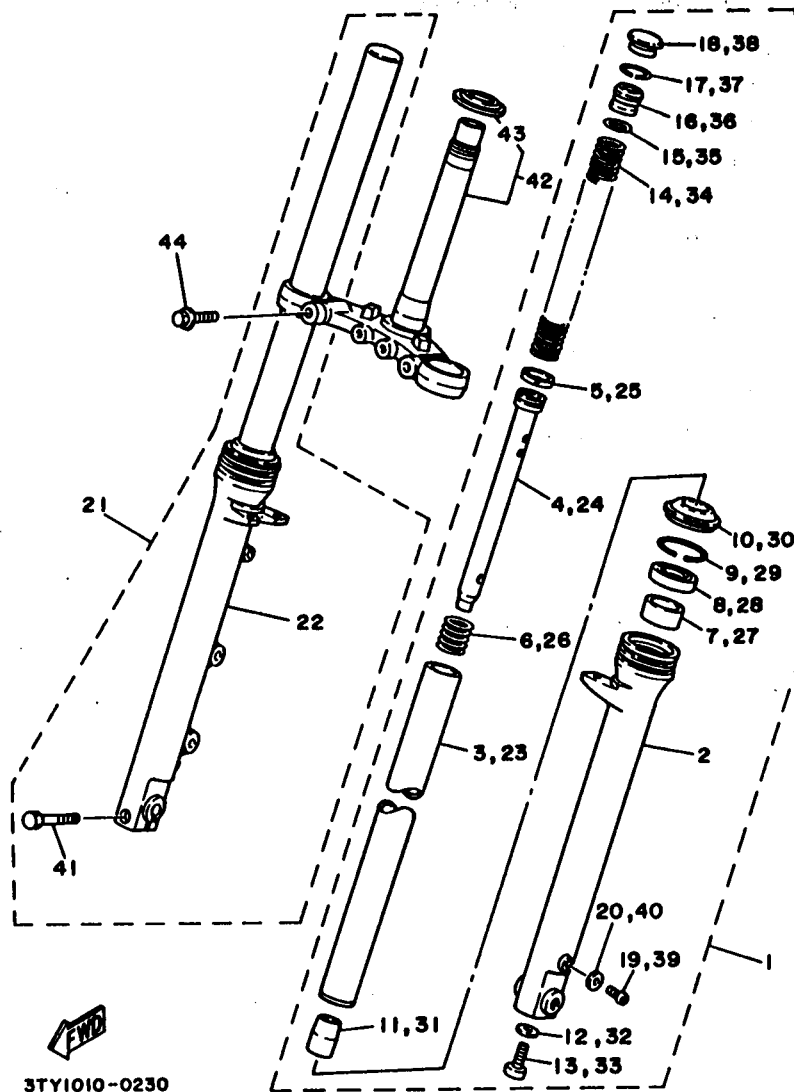
REF. NO.	PART NO.	DESCRIPTION	Q'TY	REMARKS
1	156-23412-00	RACE, ball 2	1	
2	183-23411-00	RACE, ball 1	1	
3	183-23412-00	RACE, ball 2	1	
4	93501-04011	BALL	38	
5	136-23415-00	COVER, ball race 1	1	
6	90179-25033	NUT	1	
7	2RH-23435-00	CROWN, handle	1	
8	90105-14102	BOLT, washer based	1	
9	91311-08035	BOLT	2	
10	90461-08031	CLAMP	1	
11	2RH-23174-00	STAY, headlight	1	
12	95816-06012	BOLT, flange	4	
13	2RH-2317E-00	STAY	1	
14	2RH-2317F-00	STAY 2	1	
15	90149-06264	SCREW	4	

FWD

2RH300-7220

C13

FIG. 23 FRONT FORK

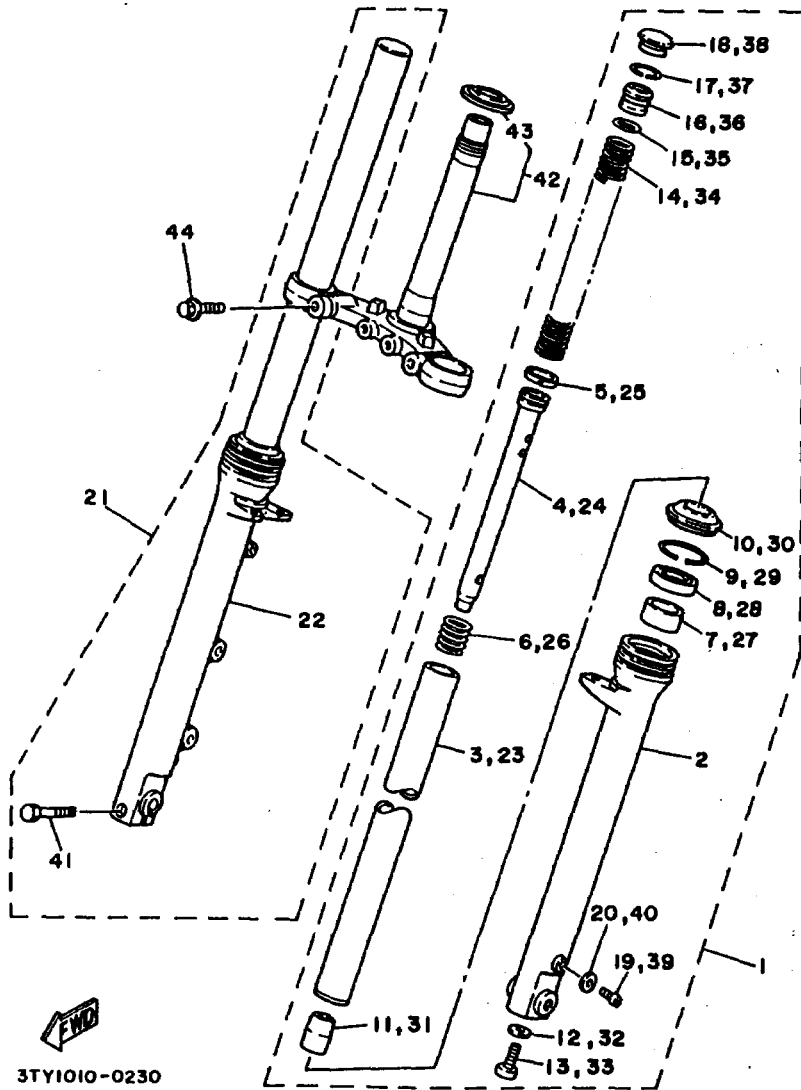


3TY1010-0230

REF. NO.	PART NO.	DESCRIPTION	Q'TY	REMARKS
1	3PA-23102-00	FRONT FORK ASSY (L.H)	1	
2	3PA-23126-00	.TUBE, outer 1	1	
3	1GU-23110-00	.INNER TUBE COMP.1	1	
4	3PA-23171-00	.PISTON, front fork	1	
5	1GU-23157-00	.RING, piston	1	
6	1GU-23151-00	.SPRING, rebound	1	
7	1GU-23125-00	.METAL, slide 1	1	
8	93110-33023	.OIL SEAL	1	
9	93450-46113	.CIRCLIP	1	
10	1GU-23144-00	.SEAL, dust	1	
11	3PA-23173-00	.SPINDLE, taper	1	
12	90430-08155	.GASKET	1	
13	91311-08025	.BOLT	1	
14	1GU-23141-00	.SPRING, front fork	1	
15	93210-23587	.O-RING	1	
16	1GU-23111-00	.BOLT, cap	1	
17	93450-31114	.CIRCLIP	1	
18	1GU-23154-00	.PLUG, inner tube	1	
19	98501-04006	.SCREW, pan head	1	
20	5U8-23129-00	.GASKET, drain plug	1	
21	3PA-23103-00	FRONT FORK ASSY (R.H)	1	
22	3PA-23136-00	.TUBE, outer 2	1	
23	1GU-23110-00	.INNER TUBE COMP.1	1	
24	3PA-23171-00	.PISTON, front fork	1	
25	1GU-23157-00	.RING, piston	1	
26	1GU-23151-00	.SPRING, rebound	1	
27	1GU-23125-00	.METAL, slide 1	1	
28	93110-33023	.OIL SEAL	1	

C14

FIG. 23 FRONT FORK

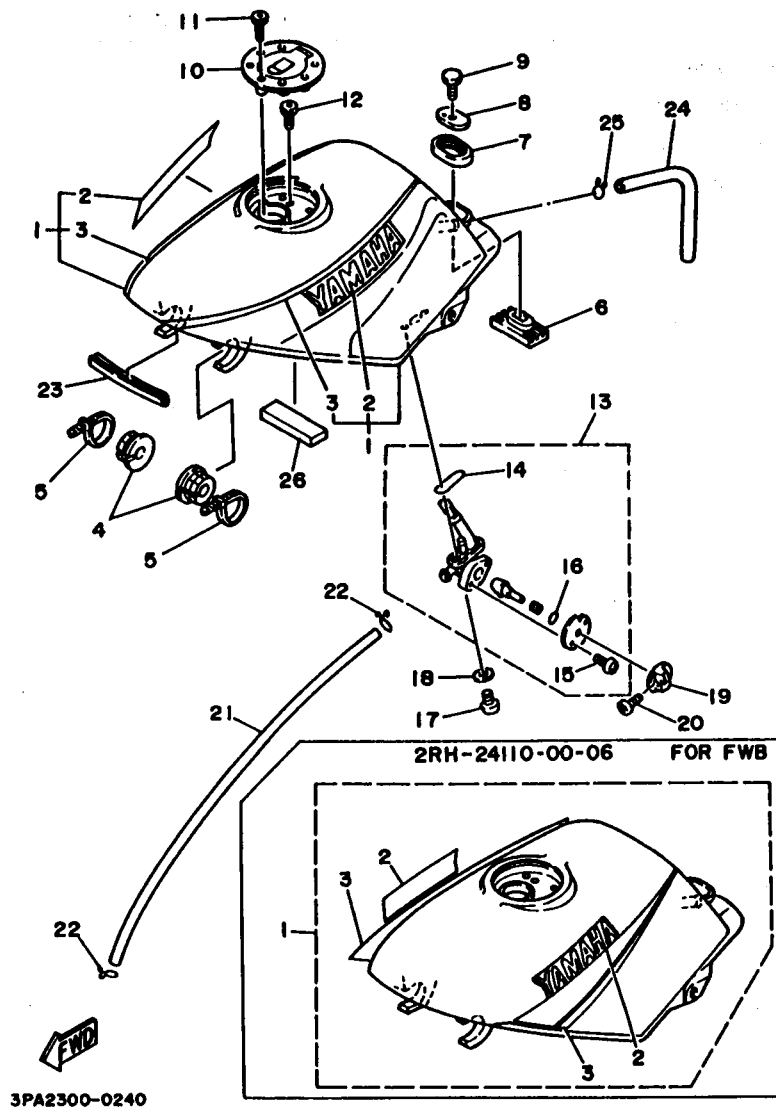


3TY1010-0230

REF. NO.	PART NO.	DESCRIPTION	Q'TY	REMARKS
29	93450-46113	.CIRCLIP	1	
30	1GU-23144-00	.SEAL, dust	1	
31	3PA-23173-00	.SPINDLE, taper	1	
32	90430-08155	.GASKET	1	
33	91311-08025	.BOLT	1	
34	1GU-23141-00	.SPRING, front fork	1	
35	93210-23587	.O-RING	1	
36	1GU-23111-00	.BOLT, cap	1	
37	93450-31114	.CIRCLIP	1	
38	1GU-23154-00	.PLUG, inner tube	1	
39	98501-04006	.SCREW, pan head	1	
40	5U8-23129-00	.GASKET, drain plug	1	
41	91311-08030	.BOLT	1	
42	1GM-23340-00	UNDER BRACKET COMP.	1	
43	156-23411-00	.RACE, ball 1	1	
44	95821-10030	BOLT, flange	2	

C15

FIG. 24 FUEL TANK

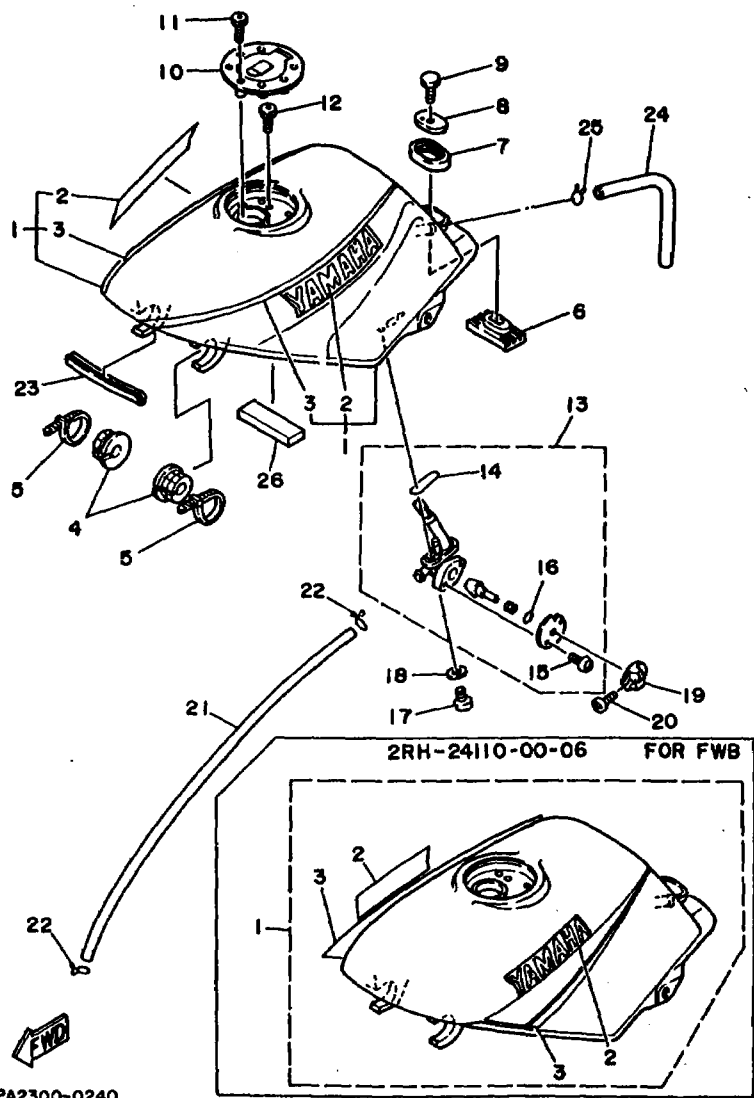


REF. NO.	PART NO.	DESCRIPTION	Q'TY	REMARKS
1	2RH-24110-00-05	FUEL TANK COMP.	1	UR SILKY WHITE/FINE RED
	2RH-24110-00-06	FUEL TANK COMP.	1	UR FARAWAY BLUE
	2RH-24110-00-07	FUEL TANK COMP.	1	UR NEW BLACK BLUE/ STAR SILVER
2	99224-00040	.EMBLEM, yamaha	2	UR FOR SW
	99221-00040	.EMBLEM, yamaha	2	UR FOR FWB
	99226-00040	.EMBLEM, yamaha	2	UR FOR NBB
3	3PA-24240-20	.GRAPHIC SET	1	UR FOR SW
	3PA-24240-30	.GRAPHIC SET	1	UR FOR FWB
	3PA-24240-40	.GRAPHIC SET	1	UR FOR NBB
4	46X-24181-00	DAMPER, locating 1	2	
5	12R-82591-00	BAND	2	
6	1AE-24183-00	DAMPER, locating 3	1	
7	3Y6-24183-00	DAMPER, locating 3	1	
8	12R-24186-00	WASHER, special	1	
9	98002-08030	BOLT	1	
10	1JK-24602-11	CAP ASSY	1	
11	90110-05112	BOLT, hexagon socket head	3	
12	91311-05010	BOLT	1	
13	2RH-24500-01	FUEL COCK ASSY 1	1	
14	4X8-24512-00	.O-RING	1	
15	98503-03008	.SCREW, pan head	2	
16	4X8-24534-00	.SEAL, cock	1	
17	90149-06011	SCREW	2	
18	90202-05193	WASHER, plate	2	
19	29L-24524-01	LEVER, cock	1	
20	98506-03008	SCREW, pan head	1	
21	90445-102F4	HOSE	1	
22	90467-09006	CLIP	2	

D2

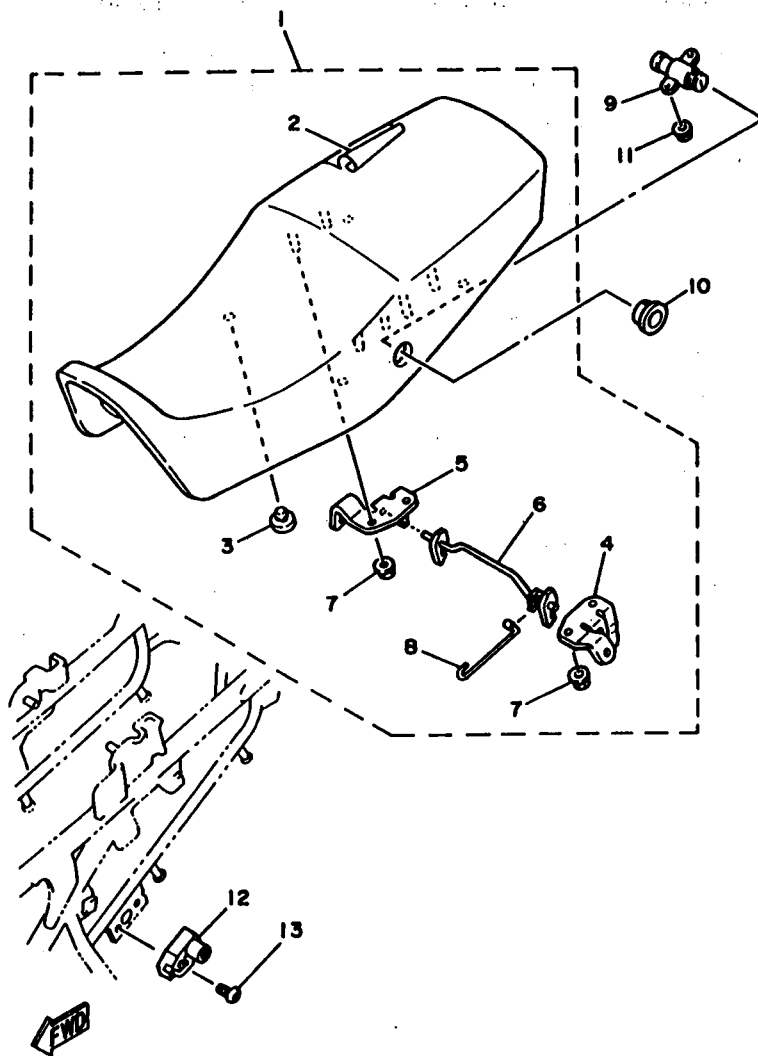
FIG. 24 FUEL TANK

REF. NO.	PART NO.	DESCRIPTION	Q'TY	REMARKS
23	1HX-24188-01	MOLD, fuel tank	1	
24	90445-102G9	HOSE	1	
25	90467-09006	CLIP	1	
26	1KT-2414G-00	SEAL	1	



3PA2300-0240

D3



2RH300-7250

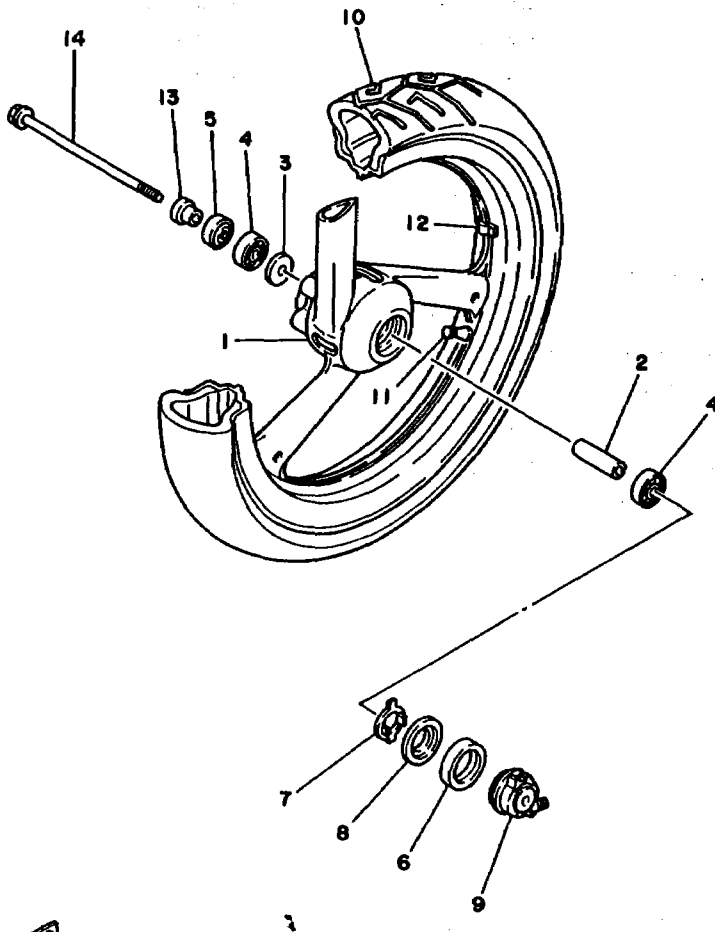
FIG. 25 SEAT

REF. NO.	PART NO.	DESCRIPTION	Q'TY	REMARKS
1	2RH-24730-00	DOUBLE SEAT ASSY	1	UR BLACK
	2RH-24730-10	DOUBLE SEAT ASSY	1	UR BLUE
2	2RH-24731-10	.COVER, seat	1	UR BLUE
	2RH-24731-00	.COVER, seat	1	UR BLACK
3	22W-24741-00	.PAD, seat	4	
4	1KT-24718-00	.BRACKET, seat	1	
5	1KT-24728-00	.BRACKET, seat	1	
6	2RH-24776-00	.LEVER, seat	1	
7	95701-06500	.NUT, flange	4	
8	1KT-2478F-00	.ROD, connecting	1	
9	51X-24705-00	SEAT LOCK ASSY	1	
10	47X-24796-00	COVER	1	
11	95701-05500	NUT, flange	2	
12	26H-21308-00	HELMET HANGER ASSY	1	
13	90149-06150	SCREW	1	

D4

FIG. 26 FRONT WHEEL

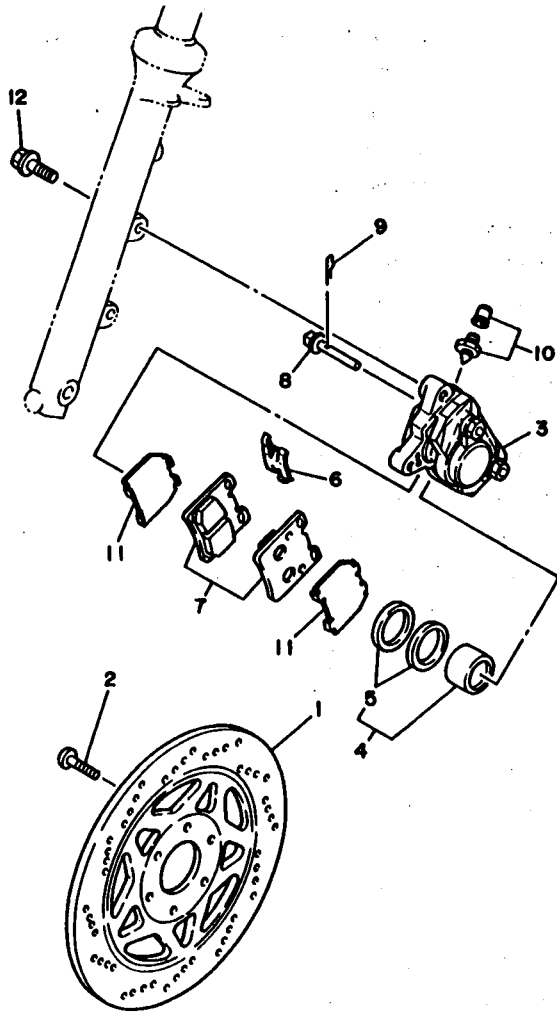
REF. NO.	PART NO.	DESCRIPTION	Q'TY	REMARKS
1	2TV-25168-00-UA	CAST WHEEL, front	1	CAST WHEEL WHITE
2	90560-12332	SPACER	1	
3	109-25315-00	FLANGE, spacer	1	
4	93306-30101	BEARING (B6301)	2	
5	93106-20002	OIL SEAL	1	
6	93105-45017	OIL SEAL	1	
7	341-25149-00	CLUTCH, meter	1	
8	341-25846-00	RETAINER, clutch	1	
9	2L4-25190-00	GEAR UNIT ASSY	1	
10	94109-174W9	TIRE (90/80-17 46S,K275FA)	1	UR DUNLOP
	94109-175W0	TIRE (90/80-17 46S,F-208)	1	UR YOKOHAMA
11	93900-00030	VALVE, rim	1	
12	29L-25398-00	BALANCER, wheel (10G)	1	UN
	29L-25398-10	BALANCER, wheel (20G)	1	UN
	29L-25398-20	BALANCER, wheel (30G)	1	UN
13	90387-123N2	COLLAR	1	
14	51Y-25181-00	AXLE, wheel	1	



3TY1010-0260

D5

FIG. 27 FRONT BRAKE CALIPER



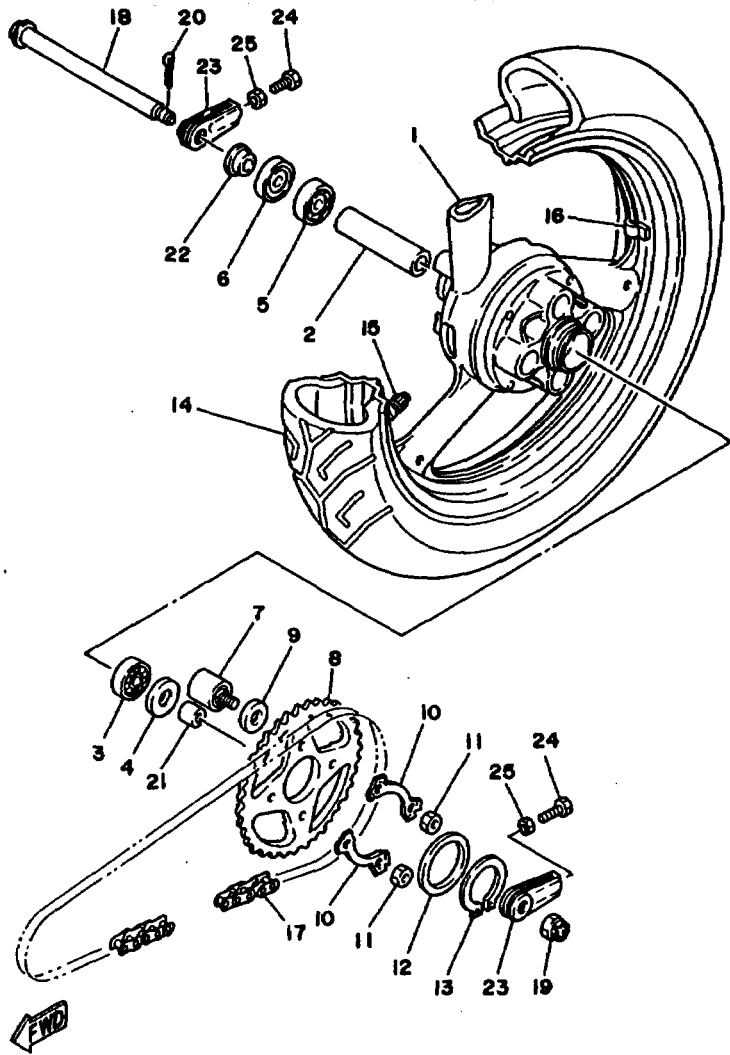
REF. NO.	PART NO.	DESCRIPTION	Q'TY	REMARKS
1	2TV-25831-00-35	DISC, brake (RIGHT)	1	SILVER
2	90109-08718	BOLT	6	
3	3PA-2580U-00	CALIPER ASSY (RIGHT)	1	
4	31A-W0057-00	.PISTON ASSY, caliper	1	
5	31A-W0047-00	.CALIPER SEAL KIT	1	
6	1WG-25919-00	.SUPPORT, pad	1	
7	3PA-W0045-00	.BRAKE PAD KIT	1	
8	1KT-25924-00	.PIN, pad	2	
9	26H-25925-00	.CLIP	2	
10	1J3-W0048-00	.BREED SCREW KIT	1	
11	3NU-25827-00	.SHIM, caliper	2	
12	90105-10308	BOLT, washer based	2	



3TY1010-0270

D6

FIG. 28 REAR WHEEL

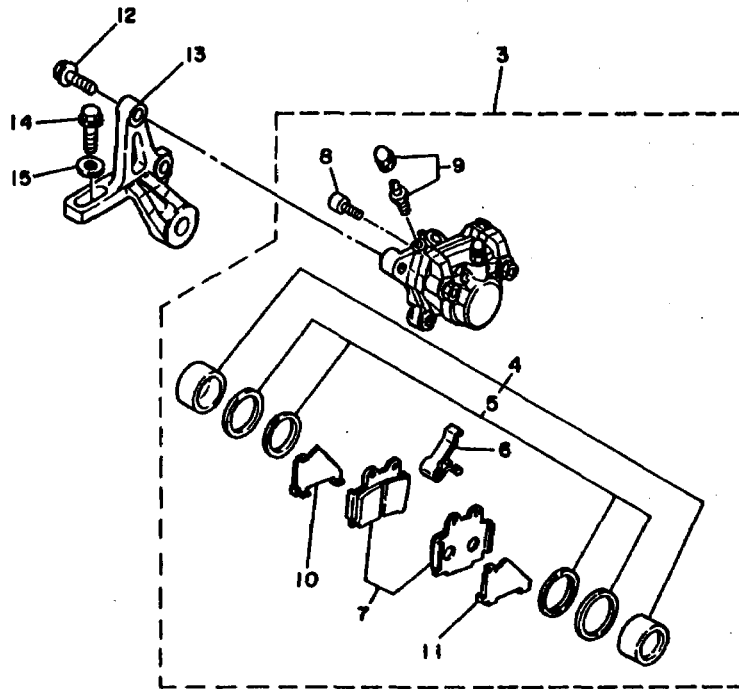


3TY1010-0280

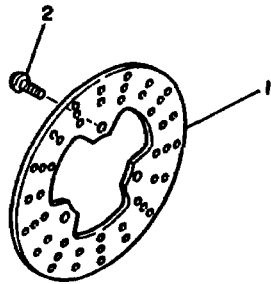
REF. NO.	PART NO.	DESCRIPTION	Q'TY	REMARKS
1	3PA-25338-00-UA	CAST WHEEL, rear	1	CAST WHEEL WHITE
2	90560-15369	SPACER	1	
3	93306-30203	BEARING (B6302Z)	1	
4	93102-22014	OIL SEAL	1	
5	93306-20222	BEARING	1	
6	93102-22216	OIL SEAL	1	
7	4L1-25364-00	DAMPER	4	
8	3PA-25445-21	SPROCKET, driven (45T)	1	
9	90560-23219	SPACER	4	
10	5H0-25412-00	WASHER	2	
11	90170-10219	NUT	4	
12	90201-543E4	WASHER, plate	1	
13	93410-52034	CIRCLIP	1	
14	94110-185W1	TIRE (100/90-18 56S,K275A)	1	UR DUNLOP
	94110-185W2	TIRE (100/90-18 56S,R-208)	1	UR YOKOHAMA
15	93900-00030	VALVE, rim	1	
16	29L-25398-00	BALANCER, wheel (10G)	1	UN
	29L-25398-10	BALANCER, wheel (20G)	1	UN
	29L-25398-20	BALANCER, wheel (30G)	1	UN
17	94581-43130	CHAIN	1	
18	1W1-25181-01	AXLE, wheel	1	
19	90171-14020	NUT, castle	1	
20	91401-30030	PIN, cotter	1	
21	90387-15765	COLLAR	1	
22	90387-153N7	COLLAR	1	
23	4L0-25389-00	PULLER, chain 2	2	
24	90101-08699	BOLT	2	
25	95303-08700	NUT	2	

D7

FIG. 29 REAR BRAKE CALIPER



REF. NO.	PART NO.	DESCRIPTION	Q'TY	REMARKS
1	1WG-25831-50	DISC, brake	1	
2	90109-08718	BOLT	3	
3	1KT-2580W-00	CALIPER ASSY, rear 2	1	GOLD
4	51L-W0057-00	.PISTON ASSY, caliper	1	
5	51L-W0047-11	..CALIPER SEAL KIT	1	
6	51L-25919-00	.SUPPORT, pad	1	
7	1KT-W0046-52	.BRAKE PAD KIT, 2	1	
8	51L-25924-00	.PIN, pad	2	
9	51L-W0048-00	.BREED SCREW KIT	2	
10	47X-25827-00	.SHIM, caliper	1	
11	47X-25827-10	.SHIM, caliper	1	
12	90105-10308	BOLT, washer based	2	
13	1KT-25819-00	BRACKET, caliper	1	
14	95B11-10030	BOLT, flange	1	
15	90201-10437	WASHER, plate	1	

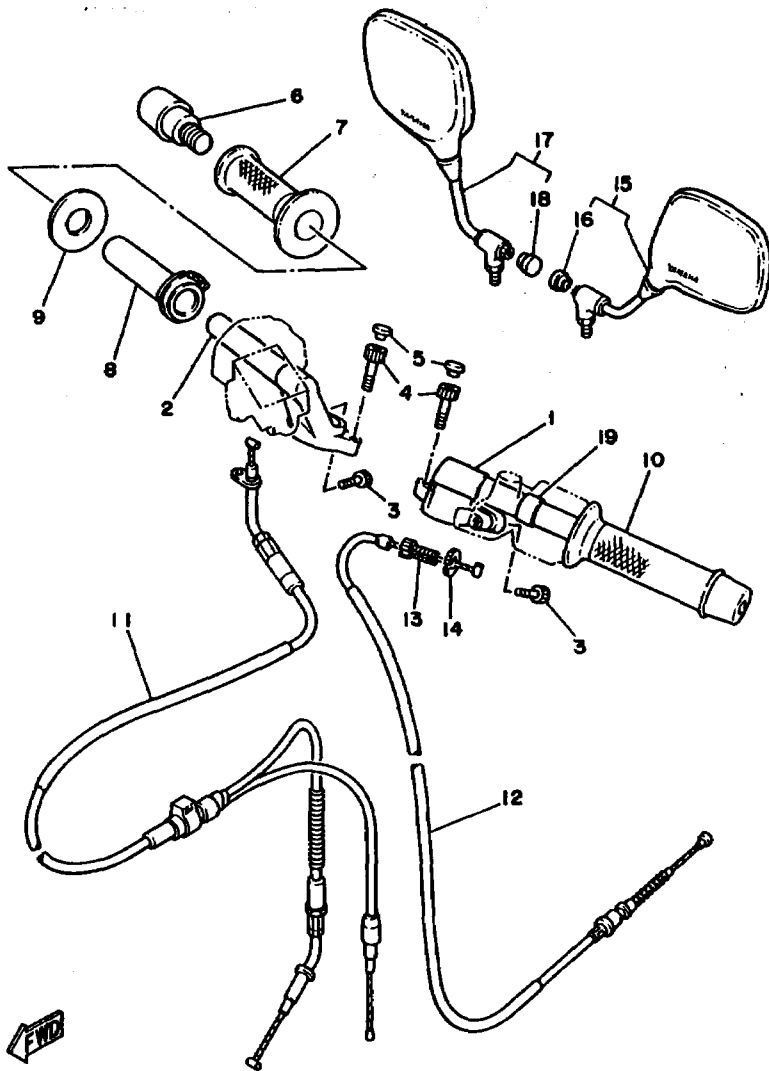


IKTO10-6300

D8

FIG. 30 STEERING HANDLE. CABLE

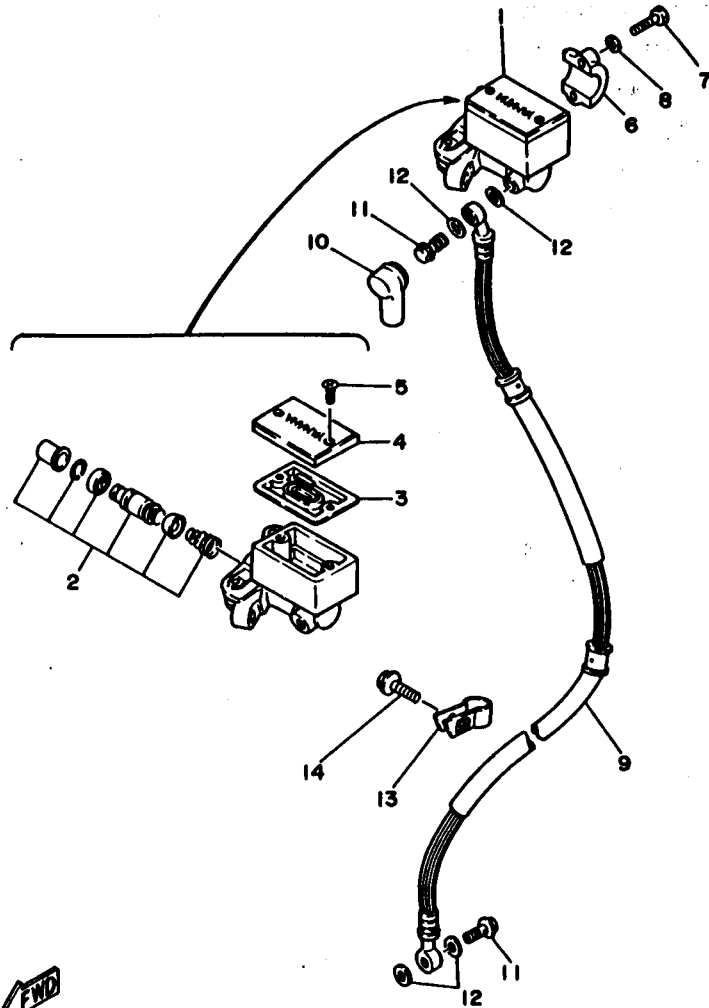
REF. NO.	PART NO.	DESCRIPTION	Q'TY	REMARKS
1	1GU-26121-00-35	HANDLEBAR (LEFT)	1	SILVER
2	1GU-26122-00-35	HANDLEBAR (RIGHT)	1	SILVER
3	91311-08025	BOLT	2	
4	91311-06020	BOLT	2	
5	2H9-23469-00	CAP, bolt	2	
6	1GU-26246-00	END, grip	2	
7	47X-26242-00	GRIP (RIGHT)	1	
8	1GU-26243-00	TUBE, throttle guide	1	
9	47X-26249-00	RING, leaf	1	
10	47X-26241-00	GRIP (LEFT)	1	
11	2RH-26260-00	CABLE ASSY, throttle & pump	1	
12	2RH-26335-00	CABLE, clutch	1	
13	90123-08083	BOLT	1	
14	90179-08316	NUT	1	
15	36Y-26290-G0	BACK MIRROR ASSY (LEFT)	1	
16	36Y-26133-00	.CAP	1	
17	36Y-26290-T0	BACK MIRROR ASSY (RIGHT)	1	
18	36Y-26133-00	.CAP	1	
19	90387-22591	COLLAR	1	



IGU361-5291

D9

FIG. 31 FRONT MASTER CYLINDER



REF. NO.	PART NO.	DESCRIPTION	Q'TY	REMARKS
1	2RJ-25870-00	MASTER CYLINDER SUB ASSY	1	
2	23L-W0041-00	.CYLINDER KIT, master	1	
3	4L0-25854-00	.DIAPHRAGM, reservoir	1	
4	4H7-25852-00	.CAP, reservoir	1	
5	98706-04012	.SCREW, flat head	2	
6	4L0-25867-00	BRACKET, master cylinder	1	
7	97016-06025	BOLT	2	
8	92906-06100	WASHER, spring	2	
9	3PA-25872-00	HOSE, brake 1	1	
10	4L0-25862-00	BOOT, master cylinder	1	
11	90401-10096	BOLT, union	2	
12	90201-10118	WASHER, plate	4	
13	2R8-25876-00	HOLDER, brake hose 2	1	
14	95023-06025	BOLT	1	



3PA1300-9300

D10

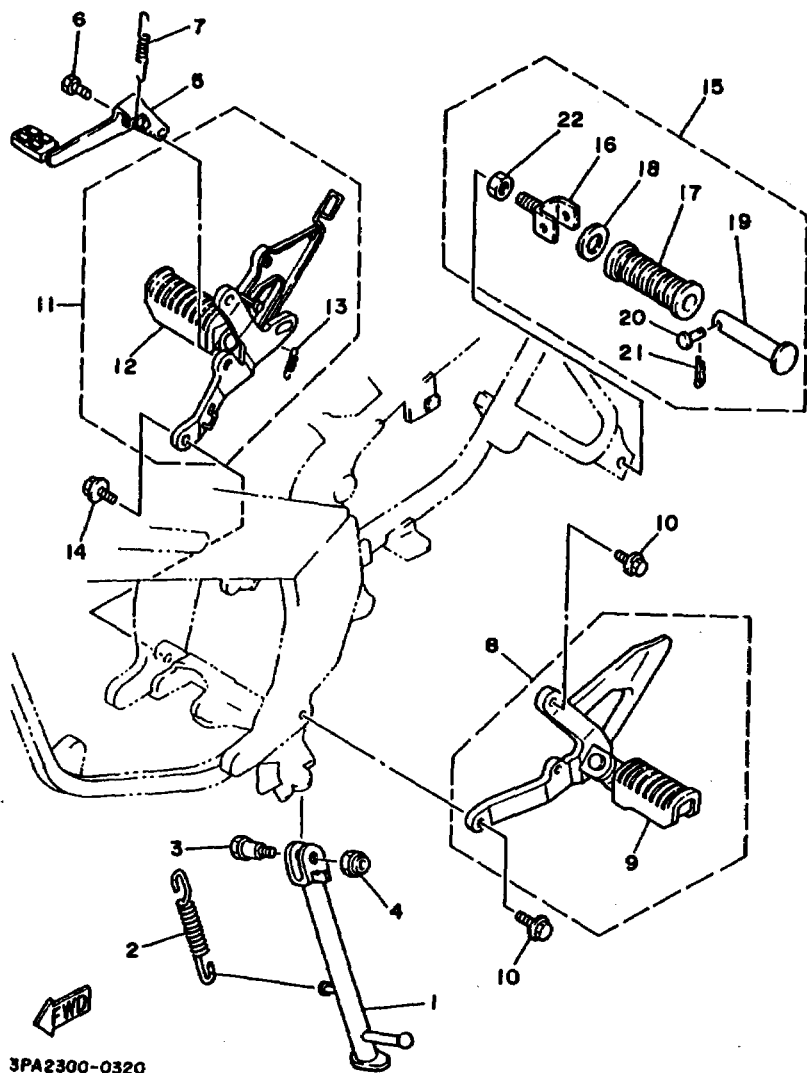
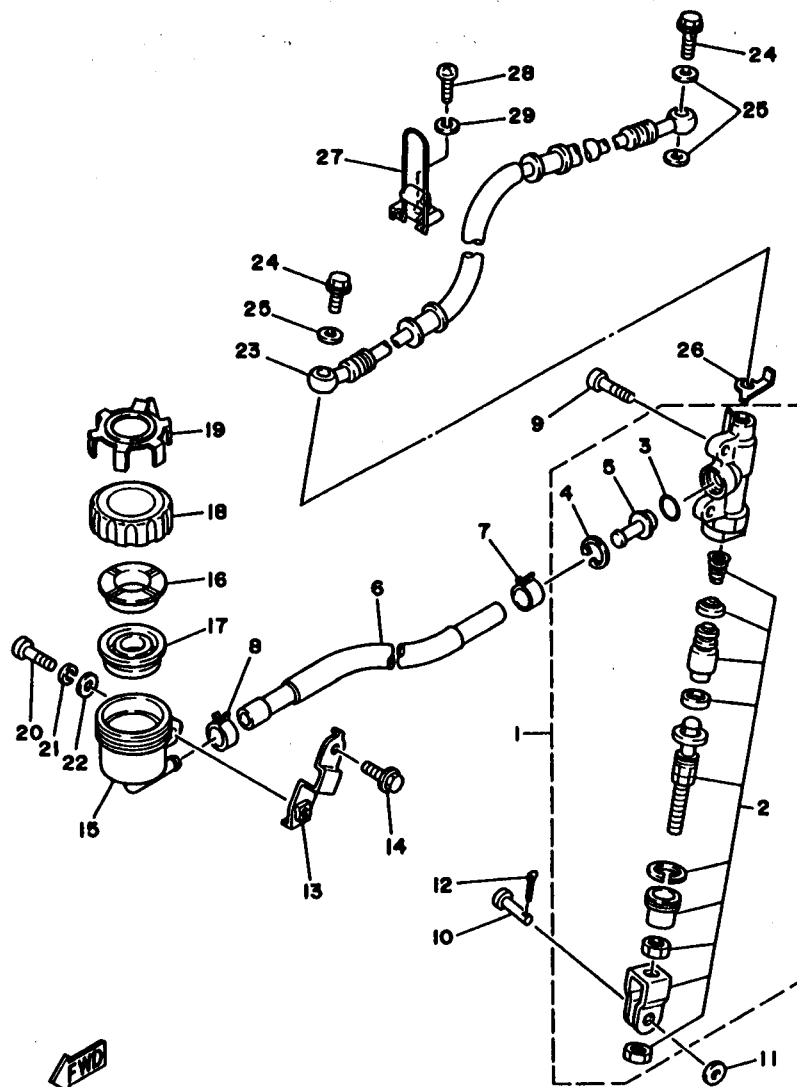


FIG. 32 STAND. FOOTREST

REF. NO.	PART NO.	DESCRIPTION	Q'TY	REMARKS
1	3PA-27311-01-R4	STAND, side	1	BLACK
2	90507-29033	SPRING, tension	1	
3	90109-100E8	BOLT	1	
4	90185-10120	NUT, self-locking	1	
5	3PA-27211-00	PEDAL, brake	1	
6	3PA-27434-00	BOLT	1	
7	90506-20369	SPRING, tension	1	
8	2RH-27410-00-35	FRONT FOOTREST ASSY (LEFT)	1	SILVER
9	4L0-27423-00	.COVER, footrest	1	
10	95821-08020	BOLT, flange	2	
11	3PA-27420-00-35	FRONT FOOTREST ASSY (RIGHT)	1	SILVER
12	4L0-27423-00	.COVER, footrest	1	
13	90506-16208	.SPRING, tension	1	
14	95821-08020	BOLT, flange	2	
15	120-27430-02	REAR FOOTREST ASSY 1	2	
16	120-27432-02	.BRACKET 1	1	
17	120-27433-00	.COVER, rear footrest	1	
18	90201-20279	.WASHER, plate	1	
19	120-27431-00	.FOOTREST, rear 1	1	
20	90240-06052	.PIN, clevis	1	
21	91401-16015	.PIN, cotter	1	
22	95301-12700	.NUT	1	

D11

FIG. 33 REAR MASTER CYLINDER



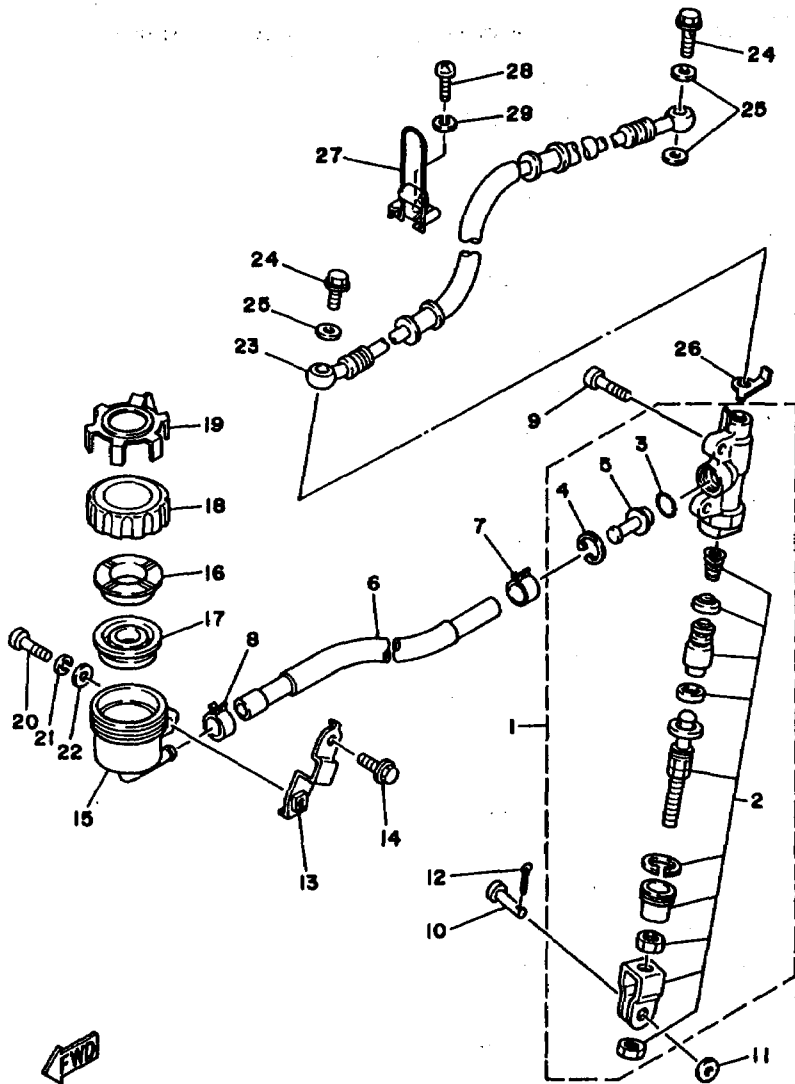
REF. NO.	PART NO.	DESCRIPTION	Q'TY	REMARKS
1	3PA-2583V-00	RR. MASTER CYLINDER ASSY.	1	
2	38N-W0042-50	.CYLINDER KIT, master	1	
3	93210-15620	.O-RING	1	
4	2VN-25866-00	.CIRCLIP	1	
5	3PA-2582A-50	.JOINT	1	
6	3PA-25895-00	HOSE, reservoir	1	
7	90467-11044	CLIP	1	
8	2YK-24356-00	CLIP, pipe 1	1	
9	92011-06020	SCREW	2	
10	90240-08124	PIN, clevis	1	
11	90201-08083	WASHER, plate	1	
12	91401-16015	PIN, cotter	1	
13	3PA-2582E-00	HOLDER, reserve tank	1	
14	91021-06012	BOLT, flange	1	
15	47X-25894-00	TANK, reservoir	1	
16	2GU-25855-00	BUSH, diaphragm	1	
17	360-25854-00	DIAPHRAGM, reservoir	1	
18	2KF-25852-50	CAP, reservoir	1	
19	3AJ-25888-00	COVER, reservoir tank	1	
20	92501-06020	SCREW, pan head	1	
21	92990-06100	WASHER, spring	1	
22	92901-06600	WASHER, plate	1	
23	3PA-25872-50	HOSE, brake 1	1	
24	90401-10096	BOLT, union	2	
25	90201-10118	WASHER, plate	3	
26	2YK-25834-00	WASHER, lock	1	
27	2GH-25875-50	HOLDER, brake hose 1	1	
28	92501-06020	SCREW, pan head	1	



3TY1010-0330

D12

FIG. 33 REAR MASTER CYLINDER



REF. NO.	PART NO.	DESCRIPTION	Q'TY	REMARKS
29	92990-06100	WASHER, spring	1	

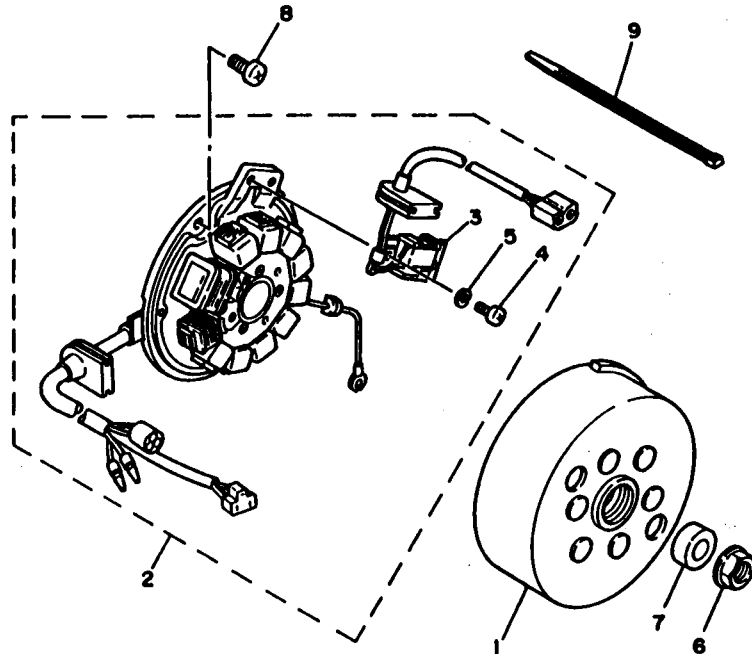


3TY1010-0330

D13

FIG. 34 GENERATOR

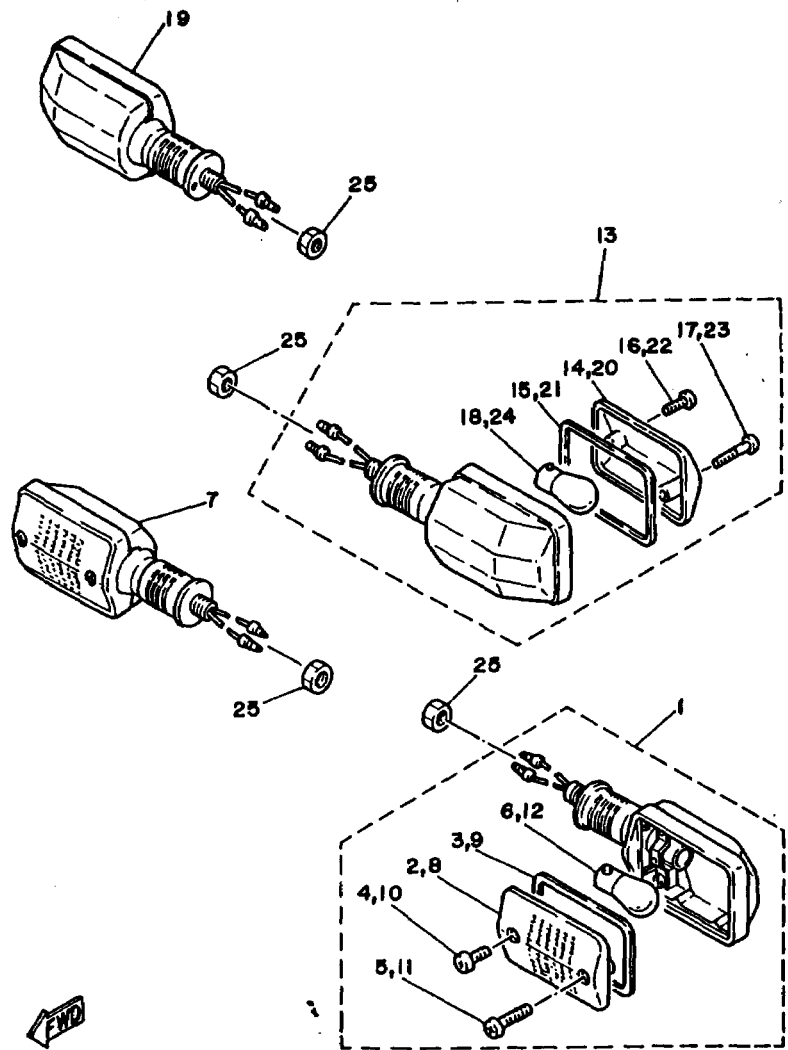
REF. NO.	PART NO.	DESCRIPTION	Q'TY	REMARKS
1	3PA-85550-00	ROTOR ASSY	1	
2	3PA-85560-00	BASE ASSY	1	
3	34X-85595-M0	.COIL, pulser	1	
4	98580-04010	.SCREW, pan head	2	
5	92901-04100	.WASHER, spring	2	
6	90179-12421	NUT	1	
7	90201-123L6	WASHER, plate	1	
8	98501-06014	SCREW, pan head	2	
9	5Y9-12491-00	CLAMP 1	2	



3TY1010-0340

D14

FIG. 35 FLASHER LIGHT

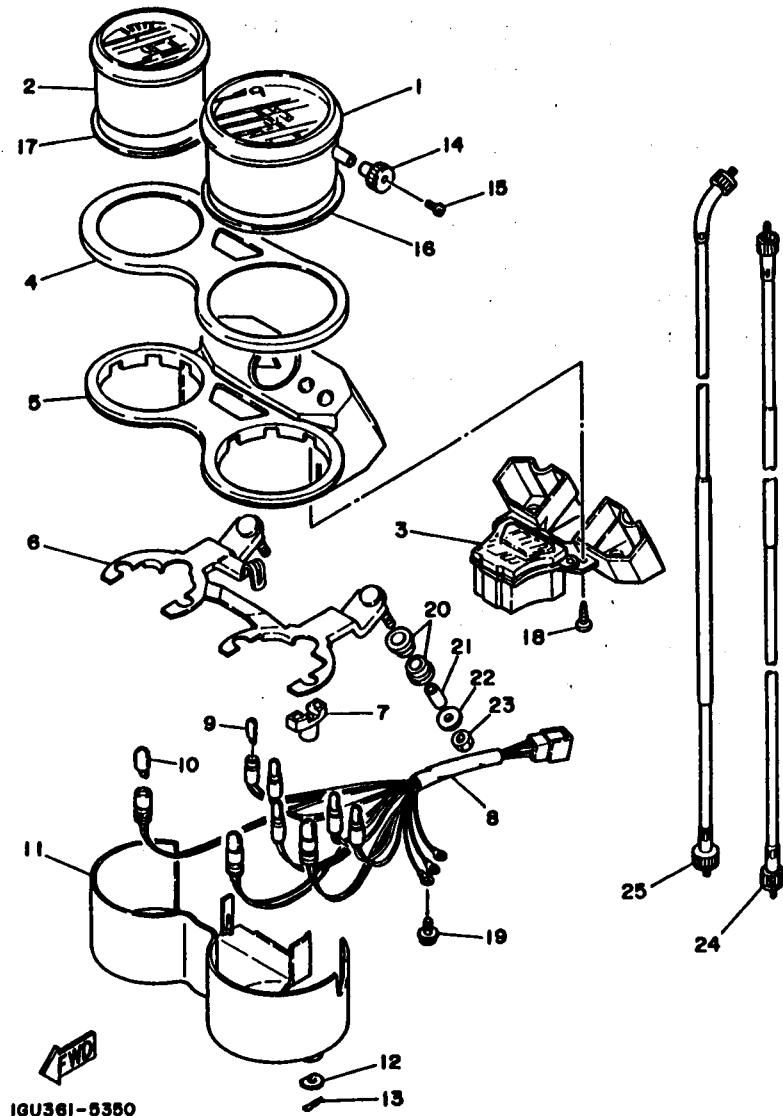


REF. NO.	PART NO.	DESCRIPTION	Q'TY	REMARKS
1	5Y3-83310-21	FRONT FLASHER LIGHT ASSY 1	1	
2	5Y1-83312-00	.LENS, flasher	1	
3	5Y1-83313-00	.GASKET, flasher lens	1	
4	98511-04012	.SCREW, pan head	1	
5	97706-40530	.SCREW, tapping	1	
6	306-83311-40	.BULB, flasher (12V-21W)	1	
7	5Y3-83310-21	FRONT FLASHER LIGHT ASSY 1	1	
8	5Y1-83312-00	.LENS, flasher	1	
9	5Y1-83313-00	.GASKET, flasher lens	1	
10	98511-04012	.SCREW, pan head	1	
11	97702-40630	.SCREW, tapping	1	
12	306-83311-40	.BULB, flasher (12V-21W)	1	
13	37A-83330-21	REAR FLASHER LIGHT ASSY 1	1	
14	5Y1-83312-00	.LENS, flasher	1	
15	5Y1-83313-00	.GASKET, flasher lens	1	
16	98511-04012	.SCREW, pan head	1	
17	97702-40630	.SCREW, tapping	1	
18	306-83311-40	.BULB, flasher (12V-21W)	1	
19	37A-83330-21	REAR FLASHER LIGHT ASSY 1	1	
20	5Y1-83312-00	.LENS, flasher	1	
21	5Y1-83313-00	.GASKET, flasher lens	1	
22	98511-04012	.SCREW, pan head	1	
23	97702-40630	.SCREW, tapping	1	
24	306-83311-40	.BULB, flasher (12V-21W)	1	
25	95316-12700	NUT	4	



2RH300-7330

D15



IGU361-5350

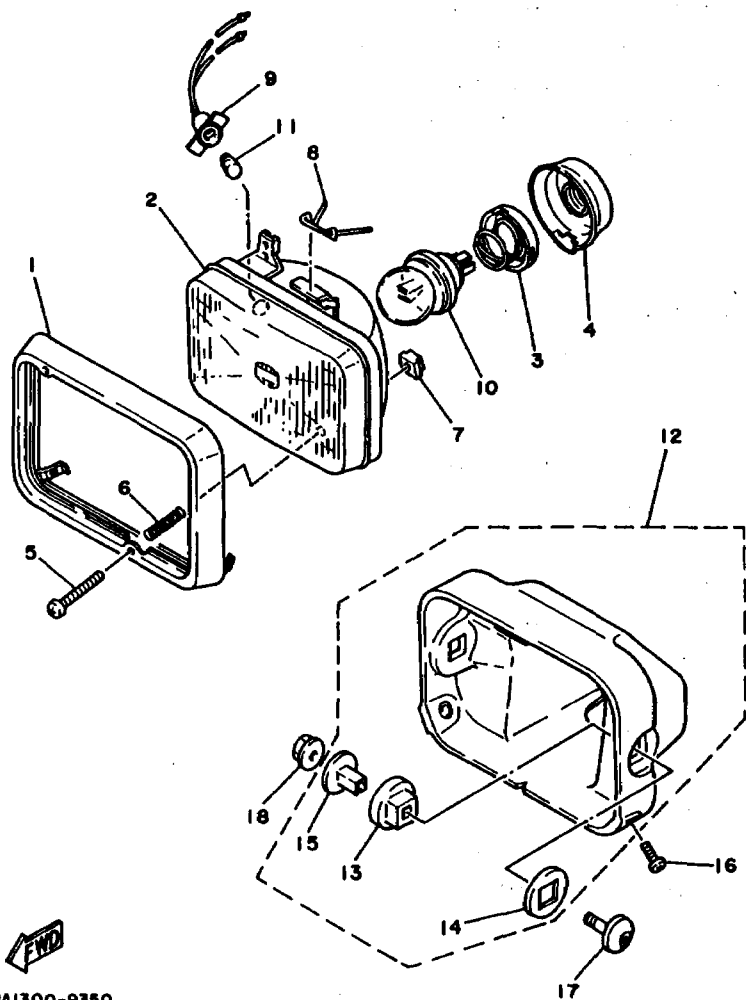
FIG. 36 METER

REF. NO.	PART NO.	DESCRIPTION	Q'TY	REMARKS
1	56K-83570-F0	SPEEDOMETER ASSY	1	
2	51Y-83540-00	TACHOMETER ASSY	1	
3	2RH-83590-00	WATER TEMPERATURE ASSY	1	
4	1GU-83611-00	PANEL, meter	1	
5	1GU-83568-00	PILOT BOX, upper	1	
6	51Y-83519-00	BRACKET, meter	1	
7	51Y-83523-00	DAMPER	4	
8	1GU-83509-00	SOCKET CORD ASSY	1	
9	42X-83517-00	BULB (12V-3W)	5	
10	4G1-84744-00	BULB (12V-3.4W)	3	
11	51Y-83579-00	COVER, meter 2	1	
12	51Y-83524-00	WASHER, special	4	
13	90468-10050	CLIP	4	
14	12R-83578-00	KNOB, trip meter	1	
15	90157-02031	SCREW, pan head	1	
16	51Y-83513-00	DAMPER	1	
17	51Y-83541-00	DAMPER	1	
18	90164-04005	SCREW, tapping	4	
19	90159-03102	SCREW, with washer	3	
20	1JK-83541-00	DAMPER	4	
21	90387-06249	COLLAR	2	
22	90201-06059	WASHER, plate	2	
23	95316-06600	NUT	2	
24	3PA-83550-00	SPEEDOMETER CABLE ASSY	1	
25	1GU-83560-02	TACHOMETER CABLE ASSY	1	

E2

FIG. 37 HEADLIGHT

REF. NO.	PART NO.	DESCRIPTION	Q'TY	REMARKS
1	562-84315-00	RIM, headlight	1	
2	10W-84321-20	LENS ASSY	1	
3	341-84393-40	HOLDER, bulb	1	
4	46X-84396-00	COVER	1	
5	98580-04055	SCREW, pan head	2	
6	341-84332-60	SPRING, screw	2	
7	198-84334-60	NUT, adjusting	2	
8	562-84324-A0	SPRING, reflector	1	
9	34L-84346-00	SOCKET, pilot light	1	
10	*	BULB (12V-60/55W)	1	LM HALOGEN
11	4E2-84347-00	BULB (12V-4W)	1	
12	10W-84330-00	BODY ASSY	1	
13	498-84163-60	.DAMPER	2	
14	1M1-84164-60	.DAMPER	2	
15	498-84145-60	.COLLAR, body fitting	2	
16	98506-05012	SCREW, pan head	2	
17	90149-08216	SCREW	2	
18	95701-08500	NUT, flange	2	

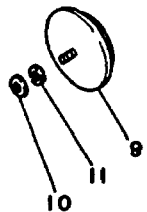
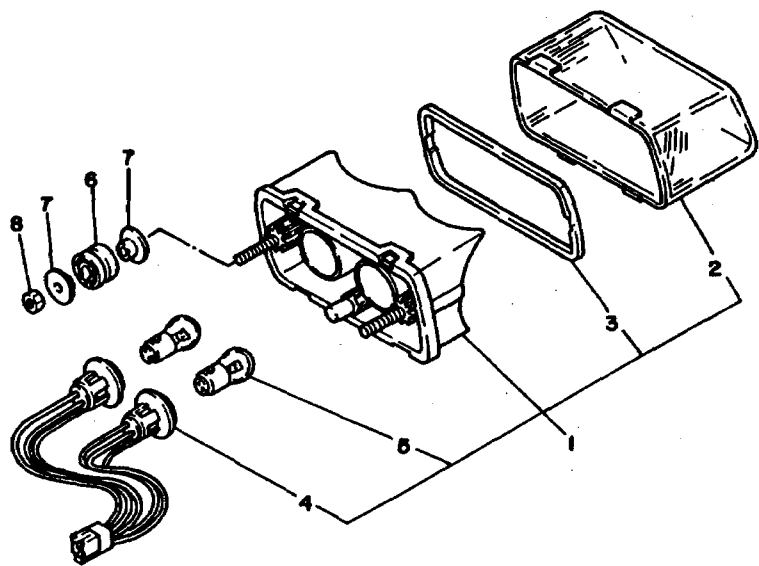


3PA1300-9350

E3

FIG. 38 TAILLIGHT

REF. NO.	PART NO.	DESCRIPTION	Q'TY	REMARKS
1	3TY-84710-00	TAILLIGHT UNIT ASSY	1	
2	47X-84721-00	.LENS, taillight	1	
3	47X-84723-00	.GASKET, tail lens	1	
4	47X-84735-00	.CORD ASSY	1	
5	31L-84714-00	.BULB, taillight (12V-21/5W)	2	
6	16G-84736-00	DAMPER, tail l	2	
7	90387-07037	COLLAR	4	
8	95303-06600	NUT	2	
9	449-85131-02	REFLECTOR, rear l	1	
10	92990-05200	WASHER, plain	1	
11	92990-05100	WASHER, spring	1	

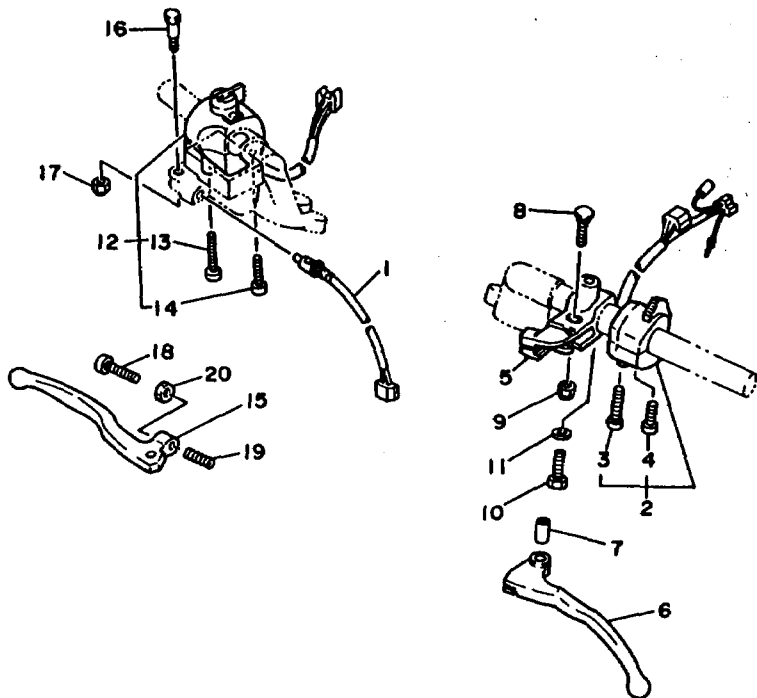


2RH300-7360

E4

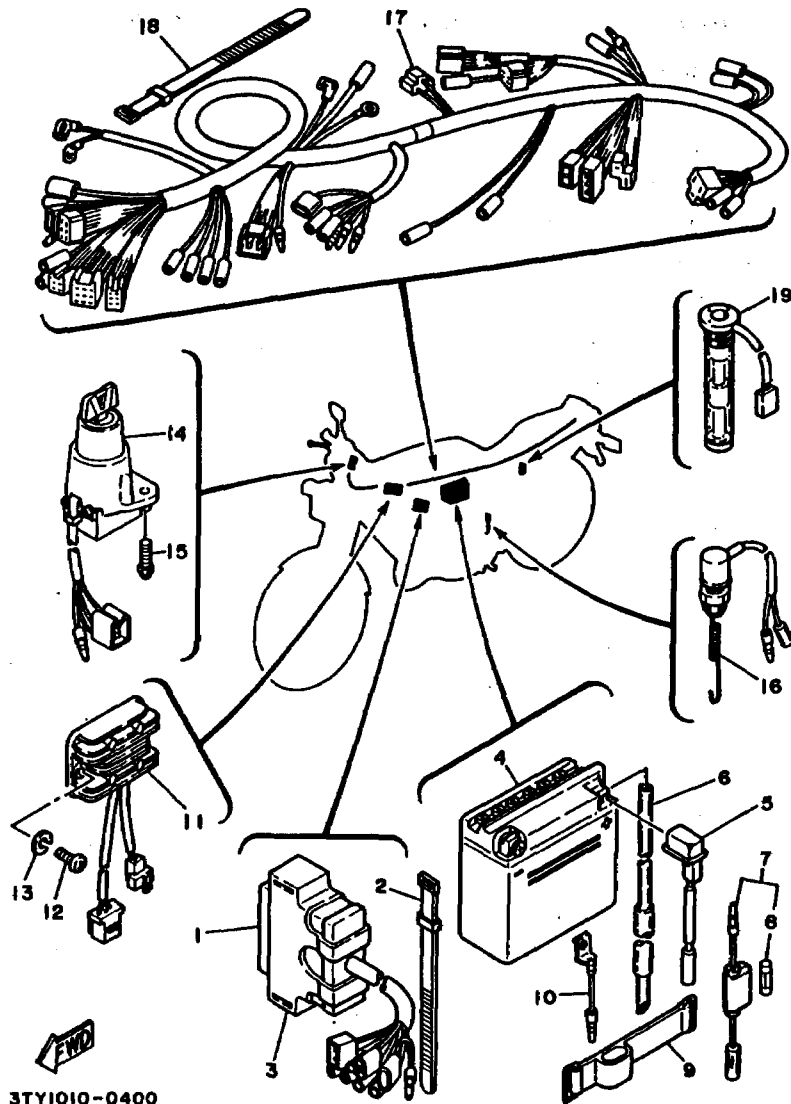
FIG. 39 HANDLE SWITCH. LEVER

REF. NO.	PART NO.	DESCRIPTION	Q'TY	REMARKS
1	34X-83980-01	FRONT STOP SWITCH ASSY	1	
2	21T-83973-00	SWITCH, handle 3	1	
3	90157-05027	.SCREW, pan head	1	
4	98501-05030	.SCREW, pan head	1	
5	57V-82911-00	HOLDER, lever 1	1	
6	3PA-83912-00	LEVER 1	1	
7	31A-83913-00	COLLAR, lever 1	1	
8	31A-83945-00	BOLT, lever	1	
9	95616-06100	NUT, u	1	
10	97006-06022	BOLT	1	
11	92906-06100	WASHER, spring	1	
12	2RH-83975-20	SWITCH, handle 2	1	
13	98506-05040	.SCREW, pan head	1	
14	98506-05030	.SCREW, pan head	1	
15	3GM-83922-00	LEVER 2	1	
16	90109-06577	BOLT	1	
17	95616-06100	NUT, u	1	
18	90149-06153	SCREW	1	
19	90501-10312	SPRING, compression	1	
20	90170-06010	NUT	1	



2RH300-7370

E5



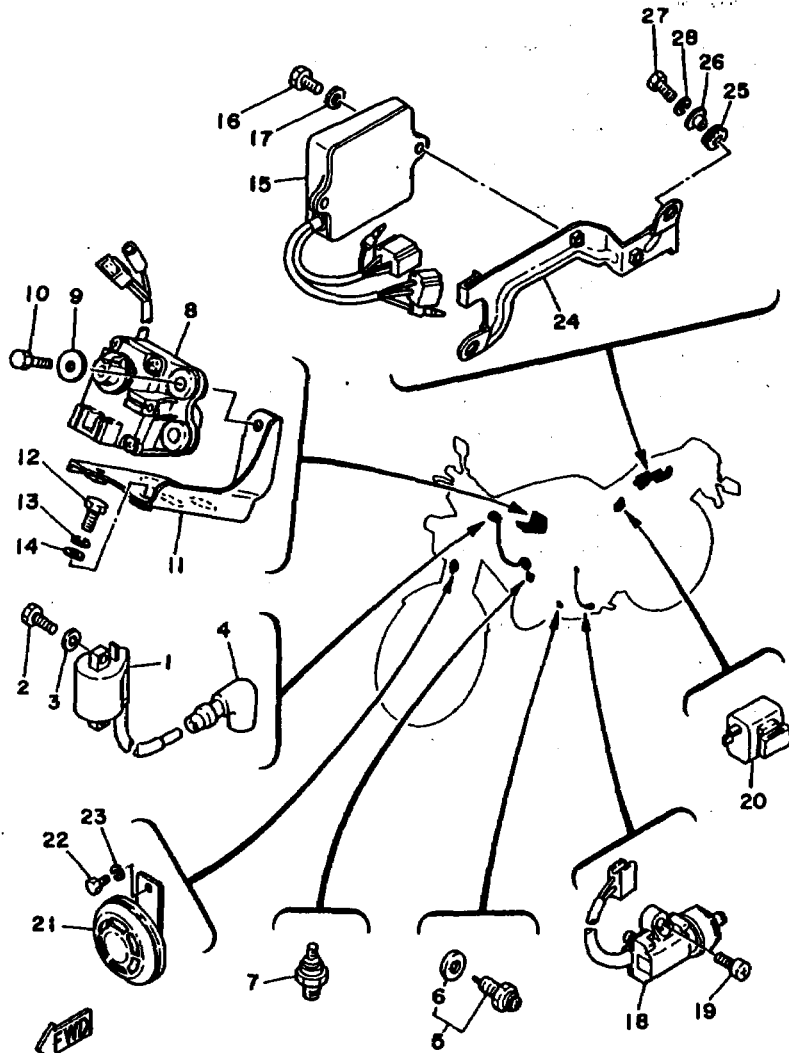
3TY1010-0400

FIG. 40 ELECTRICAL 1

REF. NO.	PART NO.	DESCRIPTION	Q'TY	REMARKS
1	3PA-85540-00	C.D.I. UNIT ASSY	1	
2	437-83936-11	BAND, switch cord	1	
3	3PA-85546-00	BAND	1	
4	235-82110-79	BATTERY ASSY (12N5-3BY)	1	
5	2RH-82115-00	WIRE, plus lead	1	
6	2RH-21826-00	PIPE, breather	1	
7	2UJ-82150-00	FUSE HOLDER ASSY	1	
8	148-82151-00	.FUSE (20A)	1	
9	22J-82131-00	BAND, battery	1	
10	2J2-82116-00	WIRE, minus lead	1	
11	5HO-81960-A0	RECTIFIER & REGULATOR ASSY	1	
12	98502-06016	SCREW, pan head	2	
13	92990-06100	WASHER, spring	2	
14	3PA-82501-00	MAIN SWITCH STEERING LOCK	1	
15	90149-06228	SCREW	2	
16	34L-82530-01	STOP SWITCH ASSY	1	
17	3PA-82590-00	WIRE HARNESS ASSY	1	
18	437-83936-11	BAND, switch cord	3	
19	2E7-85720-02	OIL LEVEL GAUGE ASSY	1	

E6

FIG. 41 ELECTRICAL 2



3PA2300-0410

REF. NO.	PART NO.	DESCRIPTION	Q'TY	REMARKS
1	2JN-82310-M0	IGNITION COIL ASSY	1	
2	97001-06020	BOLT	2	
3	92990-06100	WASHER, spring	2	
4	2TV-82370-00	PLUG CAP ASSY	1	WITH NOISE SUPPRESSOR
5	2H7-82540-00	NEUTRAL SWITCH ASSY	1	
6	341-82543-00	GASKET	1	
7	11H-83591-00	THERMO UNIT	1	
8	2RH-85820-00	SERVO MOTOR ASSY	1	
9	90201-06067	WASHER, plate	2	
10	97001-06025	BOLT	2	
11	2RH-24216-00	STAY	1	
12	97313-06016	BOLT	2	
13	92990-06100	WASHER, spring	2	
14	92901-06600	WASHER, plate	2	
15	2RH-85830-00	CONTROL UNIT ASSY	1	
16	97313-06016	BOLT	1	
17	92901-06600	WASHER, plate	1	
18	3MB-82566-00	SWITCH, side stand	1	
19	90157-05079	SCREW, pan head	2	
20	34L-83350-20	FLASHER RELAY ASSY	1	
21	33M-83371-30	HORN	1	
22	97003-06012	BOLT	1	
23	92990-06100	WASHER, spring	1	
24	2RH-21243-00	PLATE, bridge	1	
25	90480-13163	GROMMET	2	
26	90387-061F9	COLLAR	2	
27	97001-06020	BOLT	2	
28	92990-06100	WASHER, spring	2	

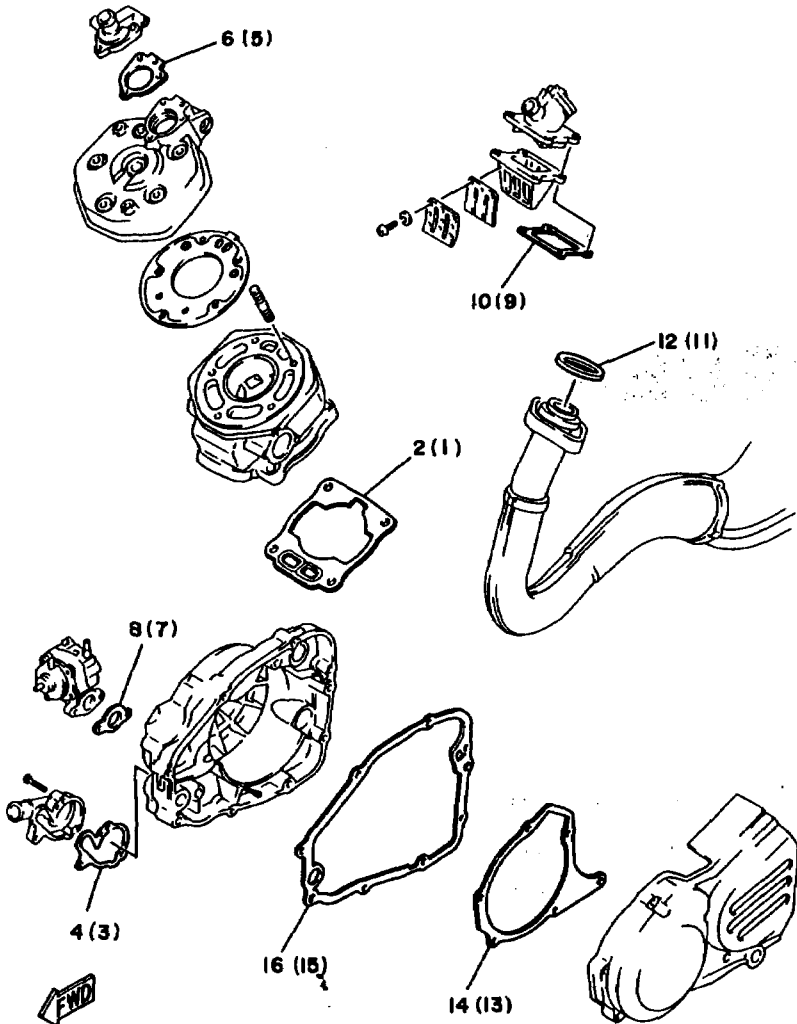
E7

INDIVIDUAL SPEC.

FOR SWEDEN

The following pages provides a listing of only the parts that meet the specifications peculiar to your market. For those parts not appearing in these pages, refer to the "GENERAL SPEC" section.

FIG. 42 ALTERNATE (ENGINE)



REF. NO.	PART NO.	DESCRIPTION	Q'TY	REMARKS
1	2RH-11351-00	GASKET, cylinder	*	
2	3PA-11351-10	GASKET, cylinder	1	
3	2RH-12428-00	GASKET, housing cover 2	*	
4	3PA-12428-10	GASKET, housing cover 2	1	
5	2RH-12414-00	GASKET, cover	*	
6	3PA-12414-10	GASKET, cover	1	
7	126-13116-00	GASKET, pump case	*	
8	3MT-13116-00	GASKET, pump case	1	
9	1KT-13621-00	GASKET, valve seat	*	
10	3PA-13621-10	GASKET, valve seat	1	
11	152-14613-00	GASKET, exhaust pipe	*	
12	3PA-14613-10	GASKET, exhaust pipe	1	
13	2RH-15455-00	GASKET 1	*	
14	3PA-15455-10	GASKET 1	1	
15	2RH-15451-00	GASKET, crankcase cover 1	*	
16	3PA-15451-10	GASKET, crankcase cover 1	1	

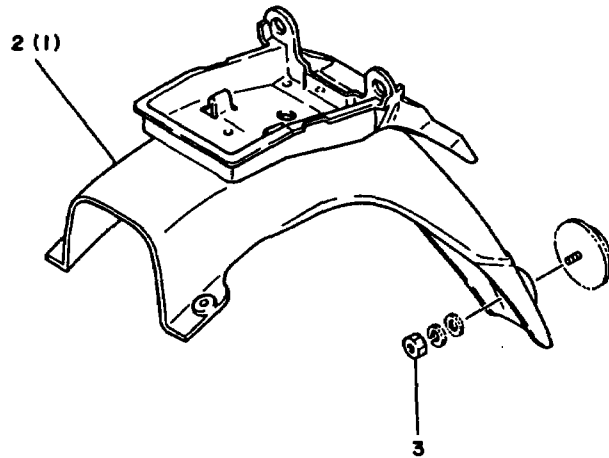
3PA2300-0420

* For convenience of reference:
 Disregard the items asterisked (*) in the "QTY" column. These are intended for
 GENERAL SPEC, and NOT for INDIVIDUAL SPEC.

E9

FIG. 43 ALTERNATE (CHASSIS)

REF. NO.	PART NO.	DESCRIPTION	Q'TY	REMARKS
1	2RH-21610-00	REAR FENDER COMP.	*	
2	2RH-21610-10	REAR FENDER COMP.	1	
3	95303-05600	NUT	1	



3PA2300-0430

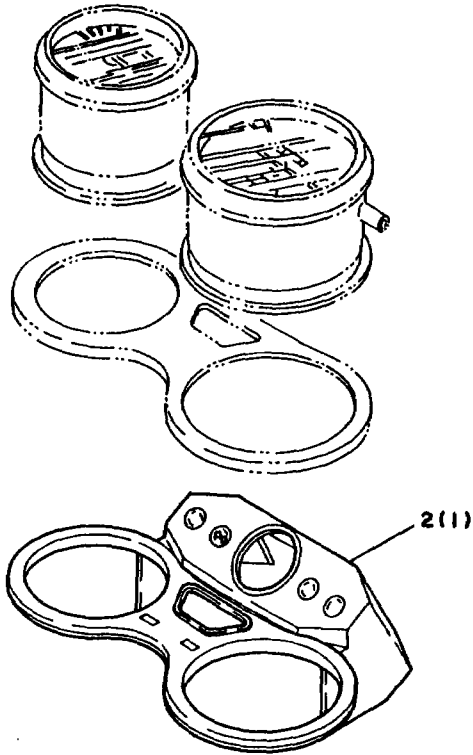
* For convenience of reference:

Disregard the items asterisked (*) in the "QTY" column. These are intended for GENERAL SPEC, and NQT for INDIVIDUAL SPEC.

E10

FIG. 44 ALTERNATE (METER)

REF. NO.	PART NO.	DESCRIPTION	Q'TY	REMARKS
1	1GU-83568-00	PILOT BOX, upper	*	
2	2RH-83568-00	PILOT BOX, upper	1	



2RH300-7410

* For convenience of reference:

Disregard the items asterisked (*) in the "QTY" column. These are intended for GENERAL SPEC, and NQT for INDIVIDUAL SPEC.

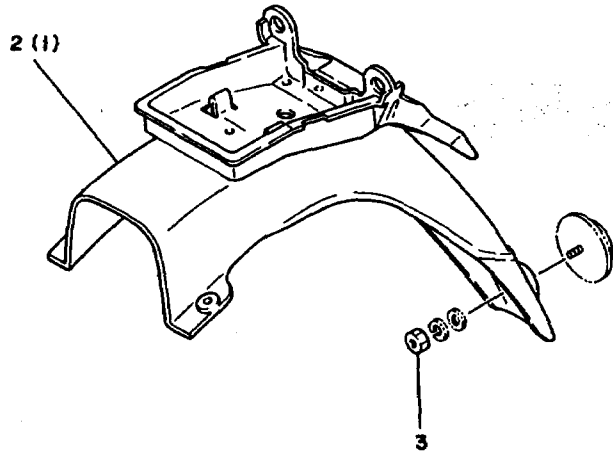
E11

FOR FINLAND

The following pages provides a listing of only the parts that meet the specifications peculiar to your market. For those parts not appearing in these pages, refer to the "GENERAL SPEC" section.

FIG. 45 ALTERNATE (CHASSIS)

REF. NO.	PART NO.	DESCRIPTION	Q'TY	REMARKS
1	2RH-21610-00	REAR FENDER COMP.	*	
2	2RH-21610-10	REAR FENDER COMP.	1	
3	95303-05600	NUT	1	



3PA2300-0430

* For convenience of reference:

Disregard the items asterisked (*) in the "QTY" column. These are intended for GENERAL SPEC, and NOT for INDIVIDUAL SPEC.

E13

INDEX

(GENERAL SPEC.)

NUMERICAL INDEX

PART NO.	GRID NO.	PART NO.	GRID NO.	PART NO.	GRID NO.	PART NO.	GRID NO.	PART NO.	GRID NO.	PART NO.	GRID NO.
23L-W0041-00	D-10	2RH-12428-00	B- 5	12R-14191-00	B-10	2RH-17211-00	C- 2	2RH-21651-00-KM	C- 8	1GU-23151-00	C-14
3BN-W0042-50	D-12	1KT-12437-00	B- 6	1GU-14197-00	B-10	2RH-17221-00	C- 2	2RH-21651-00-NJ	C- 8		C-14
3PA-W0045-00	D- 6	36F-12450-00	B- 5	183-14197-01	B-10	2RH-17231-00	C- 2	3PA-2173L-20	C- 9	1GU-23154-00	C-14
1KT-W0046-52	D- 8	2RH-12459-00	B- 5	2RH-14411-00	B- 9	2RH-17241-00	C- 2	3PA-2173L-30	C- 9		C-15
31A-W0047-00	D- 6	2RH-12460-00	B- 6	2RH-14412-01	B- 9	2RH-17251-01	C- 2	3PA-2173L-40	C- 9	1GU-23157-00	C-14
51L-W0047-11	D- 8	1KT-12462-00	B- 6	1KT-14437-00	B- 9	2RH-17261-01	C- 2	2RH-2173M-00	C- 9		C-14
1J3-W0048-00	D- 6	2RH-12481-00	B- 6	2RH-14451-00	B- 9	2JK-17411-00	C- 2	2RH-2173N-00	C- 9	2RH-2317E-00	C-13
51L-W0048-00	D- 8	2RH-12482-00	B- 6	2RH-14453-00	B- 9	2RH-17421-00	C- 2	3PA-21737-00	C- 9	2RH-2317F-00	C-13
31A-W0057-00	D- 6	2RH-12483-00	B- 6	1VJ-14462-00	B- 9	5HD-17456-00	C- 2		C- 9	3PA-23171-00	C-14
51L-W0057-00	D- 8	2RH-12484-00	B- 7	2RH-14472-00	B- 9	34Y-17460-00	C- 2	3PA-21737-10	C- 9		C-14
2A6-W2810-00	C- 8	5Y9-12491-00	D-14	152-14613-00	B-11	55K-17471-00	C- 2		C- 9	3PA-23173-00	C-14
2RH-Y2171-A0-KM	C- 9	2RH-12498-00	B- 6	2RH-14710-00	B-11	4LO-17811-00	C- 4	3PA-21737-20	C- 9		C-15
2RH-Y2171-70-GE	C- 9	2RH-13101-00	B- 8	2RH-1490J-00	B-10	4LO-17818-00	C- 4		C- 9	2RH-23174-00	C-13
2RH-Y2171-80-NJ	C- 9	8Y0-13116-01	B- 8	51L-14987-00	B-10	17F-17831-00	C- 4	3PA-2174L-20	C- 9	1GM-23340-00	C-15
2RH-Y2172-80-KM	C- 9	137-13137-00-03	B- 8	2RH-15111-01	B-12	17F-17841-00	C- 4	3PA-2174L-30	C- 9	156-23411-00	C-15
2RH-Y2172-70-GE	C- 9	137-13137-00-05	B- 8	2RH-15121-00	B-12	17F-17861-00	C- 4	3PA-2174L-40	C- 9	183-23411-00	C-13
2RH-Y2172-80-NJ	C- 9	137-13137-00-10	B- 8	37F-15128-00	B-12	55K-18101-03	C- 6	2RH-21747-00	C- 9	156-23412-00	C-13
2RH-11111-00	B- 2	137-13138-01	B- 8	3Y1-15361-00	B-13	2RH-18111-00	C- 6		C- 9	183-23412-00	C-13
2RH-11181-00	B- 2	18G-13174-00	B- 8	1RG-15363-00	B-13	2RH-18112-02	C- 6	2RH-21751-00	C-11	136-23415-00	C-13
2RH-1131A-00	B- 2	367-13174-00	B- 8	583-15371-00	B-12	132-18113-01	C- 6	2RH-2177G-00	C-10	2RH-23435-00	C-13
2JK-1131E-00	B- 2	55K-13175-01	B- 8	2RH-15411-00	B-13	2RH-18115-00	C- 6	14T-21770-00	C-11	2H9-23469-00	D- 9
2RH-1131E-00	B- 2	1E7-13176-00	B- 8	2RH-15416-00	B-13	3R4-18140-00	C- 5	4LD-21815-01	C-11	2RH-24110-00-05	D- 2
2RH-1131M-00	B- 2	10V-13178-01	B- 8	2RH-15421-00	B-13	2RH-18154-00	C- 6	2RH-21826-00	E- 6	2RH-24110-00-06	D- 2
2RH-1131R-00	B- 2	2RH-13565-00	B- 9	2RH-15451-00	B-13		C- 6	2RH-21871-00	C-11	2RH-24110-00-07	D- 2
29L-1131U-00	B- 2	2RH-13580-00	B- 9	2RH-15455-00	B-13	55K-18511-00	C- 5	3PA-22110-00-35	C-12	1KT-24146-00	D- 3
2RH-11311-00	B- 2	2RH-13584-00	B- 9	2RH-15492-00	B-12	2RH-18512-00	C- 5	401-22128-01	C-12	46X-24181-00	D- 2
29L-1132E-00	B- 2	1GU-13595-00	B- 9	156-15618-01	B-14	55K-18513-00	C- 5	34X-22141-00	C-12	1AE-24183-00	D- 2
29L-1133E-00	B- 2	1KT-13610-00	B- 9	2RH-15620-00	B-14	55K-18531-00	C- 5	2RH-22151-00	C-12	3Y6-24183-00	D- 2
2RH-11351-00	B- 2	1KT-13613-00	B- 9	10V-15641-00	B-14	2A6-18535-00	C- 5	2RH-22184-00	C-12	12R-24186-00	D- 2
2RH-11400-00	B- 3	1KT-13616-00	B- 9	10V-15651-00	B-14	2RH-18540-10	C- 5	3PA-22210-00	C-12	1HX-24188-01	D- 3
2RH-11412-00	B- 3	1KT-13621-00	B- 9	2RH-15660-00	B-14	3PA-21110-00-35	C- 7	34L-22216-00	C-12	2RH-24216-00	E- 7
2RH-11422-00	B- 3	2RH-14101-00	B-10	10V-15666-00	B-14	2RH-21150-00-35	C- 7	2RH-22311-00	C-12	3PA-24240-20	D- 2
2RH-11454-00	B- 3	31J-14103-00	B-10	2A6-16111-00	B-15	2RH-2118E-01	C- 7	3PA-23102-00	C-14	3PA-24240-30	D- 2
55K-11530-00	B- 4	10W-14104-00	B-10	2JK-16150-00	B-15	2RH-21243-00	E- 7	3PA-23103-00	C-14	3PA-24240-40	D- 2
10V-11536-01	B- 3	37F-14107-25	B-10	37F-16154-00	B-15	2RH-21288-00	C- 7	1GU-23110-00	C-14	2YK-24356-00	D-12
2MA-11610-01	B- 3	2RH-14112-20	B-10	4V0-16154-00	B-15	26H-21308-00	D- 4		C-14	2RH-24500-01	D- 2
2MA-11610-11	B- 3	1GU-14131-00	B-10	21V-16321-00	B-15	2RH-2135Y-00	C- 7	1GU-23111-00	C-14	4X8-24512-00	D- 2
2MA-11610-21	B- 3	1GU-14141-46	B-10	1V1-16324-00	B-15	34M-2139X-00	C- 9		C-15	29L-24524-01	D- 2
2RH-11631-01-15	B- 3	193-14142-22	B-10	10V-16351-00	B-15		C- 9	1GU-23125-00	C-14	4X8-24534-00	D- 2
137-11633-00	B- 3	137-14143-36	B-10	1W1-16356-01	B-15	2RH-2149F-00	C- 7		C-14	1JK-24602-11	D- 2
2RH-11635-01	B- 3	132-14146-00	B-10	3R1-16357-00	B-15	1GU-21570-00-GE	C- 8	3PA-23126-00	C-14	51X-24705-00	D- 4
2RH-11636-01	B- 3	137-14153-00	B-10	30X-16358-00	B-15	1GU-21510-00-KM	C- 8	5U8-23129-00	C-14	1KT-24718-00	D- 4
2RH-11651-00	B- 3	802-14161-00	B-10	4Y2-16371-00	B-15	1GU-21510-00-NJ	C- 8		C-15	1KT-24728-00	D- 4
37F-11681-00	B- 3	3X3-14169-00	B-10	37F-16380-01	B-15	1A8-21518-00	C- 8	3PA-23136-00	C-14	2RH-24730-00	D- 4
34X-12411-00	B- 6	2AL-14171-00	B-10	2RH-17121-00	C- 2	2RH-21610-00	C- 8	1GU-23141-00	C-14	2RH-24730-10	D- 4
2RH-12413-00	B- 6	304-14184-00	B-10	2RH-17131-01	C- 2	2RH-21629-00	C- 8		C-15	2RH-24731-00	D- 4
2RH-12414-00	B- 6	314-14185-00	B-10	2RH-17151-01	C- 2	2RH-21645-00	C- 8	1GU-23144-00	C-14	2RH-24731-10	D- 4
2RH-12422-00	B- 5	537-14186-00	B-10	2RH-17161-01	C- 2	2RH-21651-00-GE	C- 8		C-15	22W-24741-00	D- 4

NUMERICAL INDEX

PART NO.	GRID NO.	PART NO.	GRID NO.	PART NO.	GRID NO.	PART NO.	GRID NO.	PART NO.	GRID NO.	PART NO.	GRID NO.
2RH-24773-00	C- 8	47X-25894-00	D-12	3PA-82590-00	E- 6	498-84145-60	E- 3	90110-05112	D- 2	90201-06263	C- 9
2RH-24776-00	D- 4	3PA-25895-00	D-12	12R-82591-00	D- 2	498-84163-60	E- 3	90116-08042	B-11	90201-08083	D-12
1KT-2478F-00	D- 4	1WG-25919-00	D- 6	57V-82911-00	E- 5	1M1-84164-60	E- 3	90116-08318	B- 2	90201-08087	B-13
47X-24796-00	D- 4	51L-25919-00	D- 8	513-83310-21	D-15	562-84315-00	E- 3	90116-08388	B- 2	90201-081A6	C- 6
341-25149-00	D- 5	1KT-25924-00	D- 6		D-15	10W-84321-20	E- 3	90116-08392	B- 2	90201-083A6	B-11
2TV-25168-00-UA	D- 5	51L-25924-00	D- 8	306-83311-40	D-15	562-84324-A0	E- 3	90119-05001	B-15	90201-08512	B- 5
1W1-25181-01	D- 7	26H-25925-00	D- 6		D-15	10W-84330-00	E- 3	90119-06044	C-10	90201-08624	B- 8
51Y-25181-00	D- 5	1GU-26121-00-35	D- 9		D-15	341-84332-60	E- 3		C-11	90201-08649	B- 2
2L4-25190-00	D- 5	1GU-26122-00-35	D- 9		D-15	198-84334-60	E- 3	90119-06056	B- 9		C- 7
109-25315-00	D- 5	36Y-26133-00	D- 9	5Y1-83312-00	D-15	34L-84346-00	E- 3		C- 8	90201-087F0	B-11
3PA-25338-00-UA	D- 7		D- 9		D-15	4E2-84347-00	E- 3	90119-06118	C- 8	90201-087H6	C- 4
4L1-25364-00	D- 7	47X-26241-00	D- 9		D-15	341-84393-40	E- 3	90123-08083	D- 9	90201-10118	D-10
4L0-25389-00	D- 7	47X-26242-00	D- 9		D-15	46X-84396-00	E- 3	90149-06011	D- 2		D-12
29L-25398-00	D- 5	1GU-26243-00	D- 9	5V1-83313-00	D-15	3TY-84710-00	E- 4	90149-06150	D- 4	90201-10437	D- 8
	D- 7	1GU-26246-00	D- 9		D-15	31L-84714-00	E- 4	90149-06153	E- 5	90201-120E8	B-15
29L-25398-10	D- 5	47X-26249-00	D- 9		D-15	47X-84721-00	E- 4	90149-06228	E- 6	90201-123L6	D-14
	D- 7	2RH-26260-00	D- 9		D-15	47X-84723-00	E- 4	90149-06264	C-13	90201-12535	C-12
29L-25398-20	D- 5	36Y-26290-G0	D- 9	37A-83330-21	D-15	47X-84735-00	E- 4	90149-08216	E- 3		C-12
	D- 7	36Y-26290-T0	D- 9		D-15	16G-84736-00	E- 4	90154-05001	C- 9	90201-14217	B-15
5H0-25412-00	D- 7	2RH-26329-00	C- 8	34L-83350-20	E- 7	4G1-84744-00	E- 2	90157-02031	E- 2	90201-154E8	B-14
3PA-25445-21	D- 7	2RH-26335-00	D- 9	33M-83371-30	E- 7	449-85131-02	E- 4	90157-05027	E- 5	90201-200J7	B-14
3PA-2580U-00	D- 6	3PA-27211-00	D-11	1GU-83509-00	E- 2	3PA-85540-00	E- 6	90157-05079	E- 7	90201-20266	C- 2
1KT-2580W-00	D- 8	3PA-27311-01-R4	D-11	51Y-83513-00	E- 2	3PA-85546-00	E- 6	90159-03102	E- 2	90201-20279	D-11
1KT-25819-00	D- 8	2RH-27410-00-35	D-11	42X-83517-00	E- 2	3PA-85550-00	D-14	90159-06084	C-12	90201-22555	C- 2
3PA-2582A-50	D-12	3PA-27420-00-35	D-11	51Y-83519-00	E- 2	3PA-85560-00	D-14	90164-04005	E- 2	90201-543E4	D- 7
3PA-2582E-00	D-12	4L0-27423-00	D-11	51Y-83523-00	E- 2	34X-85595-M0	D-14	90170-06010	E- 5	90202-05193	D- 2
3NU-25827-00	D- 6		D-11	51Y-83524-00	E- 2	2E7-85720-02	E- 6	90170-06289	C- 6	90208-17032	B-15
47X-25827-00	D- 8	120-27430-02	D-11	51Y-83540-00	E- 2	2RH-85820-00	E- 7	90170-10219	D- 7	90209-15270	C- 2
47X-25827-10	D- 8	120-27431-00	D-11	1JK-83541-00	E- 2	2RH-85830-00	E- 7	90170-12370	B- 4	90209-18135	C- 2
3PA-2583V-00	D-12	120-27432-02	D-11	51Y-83541-00	E- 2	90101-06576	B-11		B-15	90209-22257	B- 3
1WG-25831-50	D- 8	120-27433-00	D-11	3PA-83550-00	E- 2	90101-08461	B-11	90171-14020	D- 7	90215-12271	B-15
2TV-25831-00-35	D- 6	3PA-27434-00	D-11	1GU-83560-02	E- 2	90101-08699	D- 7	90176-08026	B-11	90215-12272	B- 4
2YK-25834-00	D-12	3CV-28378-00	C- 8	1GU-83568-00	E- 2	90101-12558	C-12	90176-08040	B- 2	90240-06052	D-11
341-25846-00	D- 5	5H0-81960-A0	E- 6	56K-83570-F0	E- 2	90101-12676	C-12	90179-08316	D- 9	90240-08124	D-12
2KF-25852-50	D-12	235-82110-79	E- 6	12R-83578-00	E- 2	90105-08391	C- 7	90179-08491	B- 2	90280-03045	B- 3
4H7-25852-00	D-10	2RH-82115-00	E- 6	51Y-83579-00	E- 2	90105-08466	C- 7	90179-12244	B-15	90282-05047	B- 3
360-25854-00	D-12	2J2-82116-00	E- 6	2RH-83590-00	E- 2	90105-08494	C- 7	90179-12374	B-14	90282-05058	B- 3
4L0-25854-00	D-10	22J-82131-00	E- 6	11H-83591-00	E- 7	90105-08495	C- 7	90179-12421	D-14	90384-18157	C-12
2GU-25855-00	D-12	47X-82131-00	C- 8	1GU-83611-00	E- 2	90105-10308	D- 6	90179-25033	C-13	90387-061F9	E- 7
4L0-25862-00	D-10	2UJ-82150-00	E- 6	3PA-83912-00	E- 5		D- 8	90183-05044	B- 6	90387-06249	E- 2
2VM-25866-00	D-12	148-82151-00	E- 6	31A-83913-00	E- 5	90105-14102	C-13	90185-08054	C- 7	90387-07037	E- 4
4L0-25867-00	D-10	2JN-82310-M0	E- 7	3GM-83922-00	E- 5	90109-063F7	C- 5	90185-10120	D-11	90387-07391	C-11
2RJ-25870-00	D-10	2TV-82370-00	E- 7	437-83936-11	E- 6	90109-06577	E- 5	90185-12046	C-12	90387-07392	B- 6
3PA-25872-00	D-10	3PA-82501-00	E- 6		E- 6	90109-083A8	C- 6	90201-06M02	B- 9	90387-082T8	C- 7
3PA-25872-50	D-12	34L-82530-01	E- 6	31A-83945-00	E- 5	90109-08718	D- 6	90201-060A3	B- 6	90387-08725	C- 6
2GH-25875-50	D-12	2H7-82540-00	E- 7	21T-83973-00	E- 5		D- 8	90201-06059	E- 2	90387-123N2	D- 5
2R8-25876-00	D-10	341-82543-00	E- 7	2RH-83975-20	E- 5	90109-100E8	D-11	90201-06067	C-12	90387-124H0	C-12
3AJ-25888-00	D-12	3MB-82566-00	E- 7	34X-83980-01	E- 5	90110-05079	B- 6		E- 7	90387-153N7	D- 7

NUMERICAL INDEX

PART NO.	GRID NO.	PART NO.	GRID NO.	PART NO.	GRID NO.	PART NO.	GRID NO.	PART NO.	GRID NO.	PART NO.	GRID NO.
90387-15765	D- 7	90480-15363	B- 6	92901-06600	E- 7	93306-20335	B- 3	95316-12700	D-15	98501-05016	B- 8
90387-20219	B- 3	90480-16284	B- 6	92902-04100	B-10	93306-20562	B- 3	95601-08200	C- 7	98501-05030	E- 5
90387-22591	D- 9	90501-10312	E- 5	92906-05100	B- 6	93306-30101	D- 5	95601-12100	C-12	98501-06012	B-12
90401-06115	B- 6	90501-20568	B-15	92906-06100	B- 2	93306-30203	D- 7	95616-06100	E- 5		C- 3
	B- 7	90506-16208	D-11		C-11	93306-30210	B- 3		E- 5	98501-06014	D-14
90401-10096	D-10	90506-20369	D-11		D-10	93306-30309	C- 2	95701-05500	D- 4	98501-06055	B-12
	D-12	90507-29033	D-11		E- 5	93306-30421	C- 2	95701-06500	D- 4	98502-06016	C- 7
90405-06037	B- 6	90508-20555	B-15	92906-06600	B- 2	93306-30556	B- 3	95701-08500	E- 3		E- 6
	B- 7	90508-26561	C- 5		B- 9	93310-316H7	B- 3	95801-06012	C- 7	98503-03008	D- 2
90430-04004	B- 8	90508-26667	B-14		B-11	93310-523T3	B- 3	95801-08012	C- 8	98503-06045	B-12
90430-06166	B- 5	90508-32642	C- 6	92990-03100	B- 9	93311-31567	C- 2	95806-08070	B-13	98506-03008	D- 2
	B- 6	90560-12332	D- 5	92990-05100	E- 4	93315-21429	B-15	95811-06016	C- 8	98506-05012	E- 3
	B- 6	90560-15369	D- 7	92990-05200	E- 4	93315-31841	C-12	95811-10030	D- 8	98506-05030	E- 5
	B- 7	90560-23219	D- 7	92990-06100	C- 7	93410-20038	C- 2	95816-06012	C-13	98506-05040	E- 5
90430-08155	C-14	91021-06012	D-12		C-12	93410-22039	C- 2	95816-06025	B- 5	98506-06025	B- 5
	C-15	91021-08025	C- 7		D-12	93410-52034	D- 7		B- 6		B-13
90445-053F3	B- 8	91021-08030	C- 7		D-13	93430-08036	B- 8	95821-08016	C- 7	98511-04012	D-15
90445-084E3	B-10	91311-05010	B- 2		E- 6	93440-15012	B-14		C- 7		D-15
90445-09111	C-11		D- 2		E- 7	93450-17129	B- 3	95821-08020	D-11		D-15
90445-102F4	D- 2	91311-06020	D- 9		E- 7	93450-31114	C-14		D-11		D-15
90445-102G9	D- 3	91311-08025	C-14		E- 7		C-15	95821-10030	C-15	98511-04016	B-10
90445-12718	B- 9		C-15		E- 7	93450-46113	C-14	95826-06020	B- 6	98580-04010	D-14
90446-07321	B-12		D- 9	93101-10090	B- 8		C-15		C- 6	98580-04055	E- 3
90450-28014	B- 6	91311-08030	C-15	93101-12060	C- 6	93501-04011	C-13	97001-06020	E- 7	98706-04012	D-10
90450-44046	B- 9	91311-08035	C-13	93102-20143	C- 2	93503-16010	B-15		E- 7	98901-04008	B- 8
90460-49058	B- 9	91316-05012	B- 2	93102-20309	B-14	93603-22028	B- 5	97001-06025	C-11	98980-06016	C- 8
90461-06103	B-13		B- 2	93102-22014	D- 7		B- 8		E- 7	99001-10600	C- 6
90461-08031	C-13	91401-16015	D-11	93102-22216	D- 7	93604-10011	B- 5	97003-06012	E- 7	99080-07600	B- 5
90467-08003	C-11		D-12	93102-25331	B- 3	93608-30152	C- 6	97006-05012	B- 6	99221-00040	D- 2
	C-11	91401-30030	D- 7	93103-10147	B- 5	93900-00030	D- 5	97006-06022	E- 5	99224-00040	D- 2
90467-09006	B- 6	92011-06020	D-12	93103-32099	B- 3		D- 7	97011-06010	C- 2	99226-00040	D- 2
	D- 2	92501-06020	D-12	93104-14004	B-15	94109-174W9	D- 5		C- 4	99231-00020	C- 8
	D- 3		D-12	93105-45017	D- 5	94109-175W0	D- 5	97016-06020	B- 2	99234-00020	C- 8
90467-10008	B-10	92501-06030	B-12	93106-20002	D- 5	94110-185W1	D- 7	97016-06025	B- 9	99236-00020	C- 8
90467-10035	B- 7	92501-06060	B-12	93108-23010	B- 2	94110-185H2	D- 7		D-10	99510-10114	B- 2
90467-11044	D-12	92501-08010	B-12	93109-18020	C-12	94581-43130	D- 7	97313-06016	B- 9	99510-12016	B-12
90467-20050	B- 9	92506-06016	B- 6	93110-33023	C-14	94701-00188	B- 2		C-12	99530-10014	B-13
90467-21058	B- 9	92506-06070	B- 5		C-14	95023-06012	C- 8		E- 7		
90468-02033	B- 8		B-13	93210-12154	C- 2	95023-06025	D-10		E- 7		
	B- 8	92516-06030	B-13	93210-12327	C- 4	95301-12700	D-11	97702-40630	D-15		
90468-08086	B- 8		B-13	93210-15620	D-12	95303-05600	B- 8		D-15		
90468-10050	E- 2	92901-04100	D-14	93210-19123	B-13	95303-06600	B-15		D-15		
90468-26048	B-14	92901-05100	B- 8	93210-23587	C-14		C- 8	97706-40530	D-15		
90480-01401	C- 9	92901-06200	B-15		C-15		E- 4	97780-50525	B- 9		
	C-10		C- 8	93210-27194	B- 6	95303-08600	B-11	98002-08030	D- 2		
90480-13163	E- 7	92901-06600	C- 4	93210-27778	B- 2	95303-08700	D- 7	98501-03008	B- 9		
90480-13426	C- 9		D-12	93306-20201	C- 2	95316-06600	E- 2	98501-04006	C-14		
90480-14433	C-11		E- 7	93306-20222	D- 7	95316-06700	C- 6		C-15		

INDEX

(INDIVIDUAL SPEC.)

NUMERICAL INDEX

PART NO.	GRID NO.	PART NO.	GRID NO.	PART NO.	GRID NO.	PART NO.	GRID NO.	PART NO.	GRID NO.
3PA-11351-10	E- 9								
3PA-12414-10	E- 9								
3PA-12428-10	E- 9								
3MT-13116-00	E- 9								
3PA-13621-10	E- 9								
3PA-14613-10	E- 9								
3PA-15451-10	E- 9								
3PA-15455-10	E- 9								
2RH-21610-10	E-10								
	E-13								
2RH-83568-00	E-11								
95303-05600	E-10								
	E-13								

M2

**COPY RIGHT: ALL RIGHTS RESERVED
NO PART OF THIS PUBLICATION MAY BE
REPRODUCED WITHOUT PERMISSION.**



YAMAHA

**YAMAHA MOTOR CO., LTD.
2500 SHINGAI TWATA-SHI SHIZUOKA-KEN JAPAN**

PRINTED IN JAPAN

First edition Nov., 1989

Tō